

This Manual is provided by
CBTricks.com

Someone who wanted to help you repair your equipment
scanned this manual.

If you would like to help us put more manuals online support us.

Supporters of CBTricks.com paid for the hosting so you would have this file.

CBTricks.com is a non-commercial personal website was created to help promote the exchange of service, modification, technically oriented information, and historical information aimed at the Citizens Band, GMRS (CB "A" Band), MURS, Amateur Radios and RF Amps.

CBTricks.com is not sponsored by or connected to any Retailer, Radio, Antenna Manufacturer or Amp Manufacturer, or affiliated with any site links shown in the links database. The use of product or company names on my web site is not endorsement of that product or company.

If your company would like to provide technical information to be featured on this site I will put up on the site as long as I can do it in a non-commercial way.

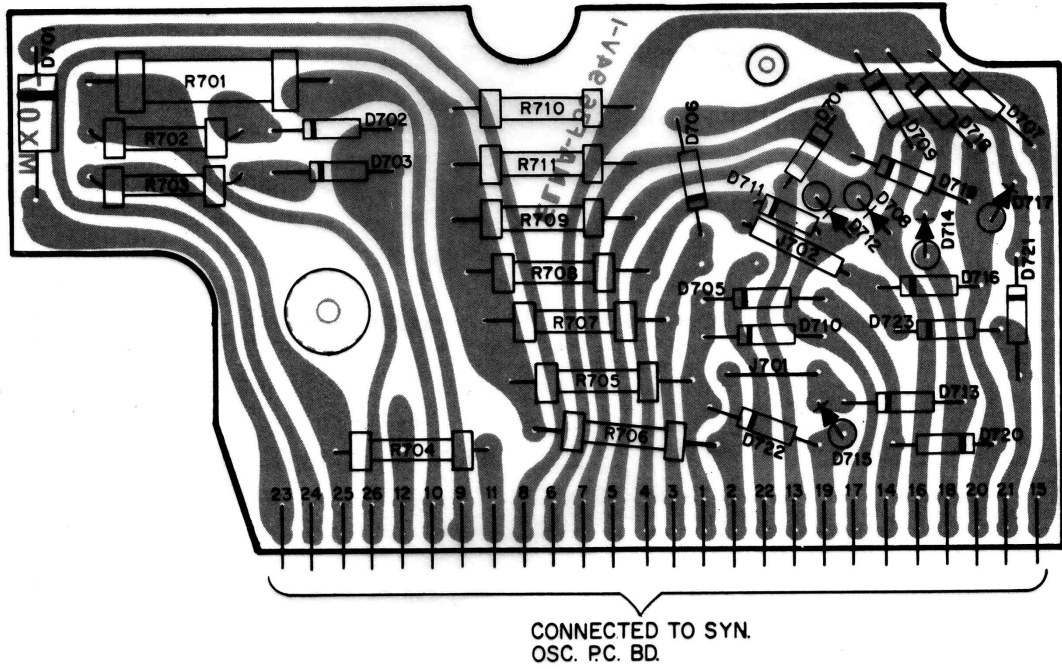
The site is supported with donation from users, friends and selling of the Galaxy Service Manual CD to cover some of the costs of having this website on the Internet instead of relying on banner ads, pop-up ads, commercial links, etc. to pay my costs. Thus I do not accept advertising banners or pop-up/pop-under advertising or other marketing/sales links or gimmicks on my website.

ALL the money from donations is used for CBTricks.com I didn't do all the work to make money (I have a day job). I all didn't do all this work for someone else to make money also, for example the ebay CD sellers.

All Trademarks, Logos, and Brand Names are the property of their respective owners.
This information is not provided by, or affiliated in any way with any radio or antenna Manufacturers.
Thank you for any support you can give.



**Component Outline
Matrix P.C. Board**



NOTES:

1. P.C. Board shown as viewed from component side.
2. Dashed outline component — mounted on foil side.

Figure 4-4

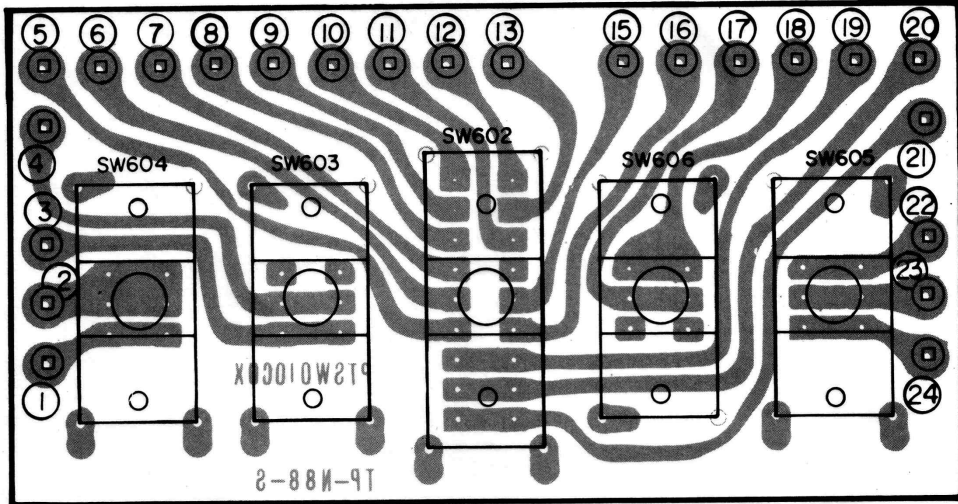
Component Outline Matrix P.C. Board

**Component Outlines
Switch and Channel LED P.C. Boards**

SWITCH P.C. BOARD

WIRING CHART

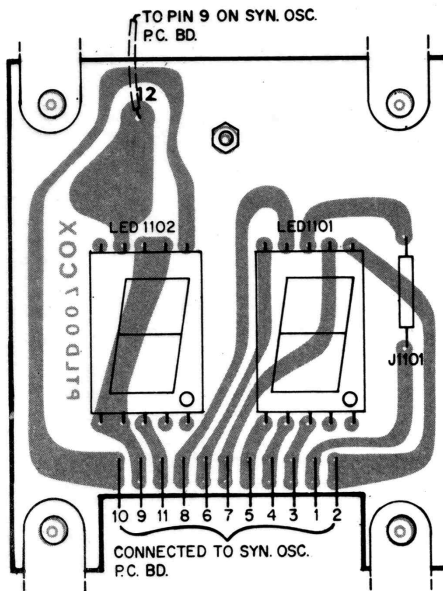
PIN NO.	WIRING CONNECTIONS
1	orange/white wire to pin 28 on main p.c. board
2	blue/white wire to pin 15 on mic p.c. board
3	gray wire to 'U' on main p.c. board
4	black wire to pin 8 on switch board
5	purple/white wire to pin 13 on mic p.c. board
6	orange wire to pin 5 on main p.c. board
7	purple wire to PA jack
8	black wire to pin 4 on switch board
9	two portion gray wire - brown tip portion to pin 46 on main p.c. board, pink portion to RV607 tone control switch
10	gray with green tip wire to RV601 VOLUME control switch gray wire with blue tip to mic jack
11	gray wire with blue tip to pin G1 on Mic p.c. board
12	gray with brown tip and pink wire coming out goes to pin 20 on main p.c. board gray shield to mic jack pink wire to mic jack
13	gray shield to pin 16 on mic p.c. board pink wire to pin 16 on mic p.c. board gray shield to RV601 VOLUME control switch pink wire to RV601 VOLUME control switch
15	pink wire to pin 8 on mic p.c. board
16	blue wire to pin 21 on mic p.c. board
17	purple wire to pin 5 on PTSR003DOX
18	purple wire to pin 5 on swr p.c. board gray wire to pin 6 on swr p.c. board purple/white wire to MOD CAL control switch
19	white wire to pin 14 on mic board
20	orange/white wire to pin 7 on mic p.c. board green/white wire to pin power switch
21	orange wire to pin 32 on main p.c. board
22	red wire to pin 2 on swr p.c. board
23	brown/white wire to swr cal control switch
24	yellow wire to pin 7 on swr p.c. board



NOTES:

1. P.C. Board shown as viewed from component side.
2. Dashed outline component — mounted on foil side.
3. See wiring Chart B for connection of wiring to pins.

Figure 4-5
Component Outline Switch P.C. Board



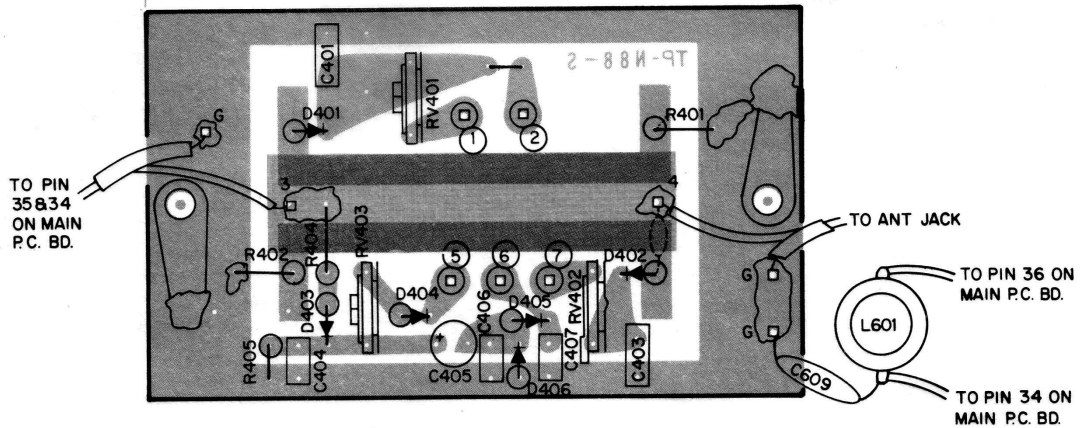
NOTES:

1. P.C. Board shown as viewed from component side.
2. Dashed outline component — mounted on foil side.

Figure 4-6
Component Outline LED P.C. Board



**Component Outline
SWR P.C. Board**



NOTES:

1. P.C. Board shown as viewed from component side.
2. Dashed outline component — mounted on foil side.
3. See wiring chart C for connection of wiring to pins.

Figure 4-7
Component Outline SWR P.C. Board

WIRING CHART

PIN NO.	WIRING CONNECTIONS
1	to swr CAL control switch
2	to pin 22 on switch board
5	to pin 17 on switch board
6	to pin 18 on switch board
7	to pin 24 on switch board