

This Manual is provided by
CBTricks.com

Someone who wanted to help you repair your equipment
scanned this manual.

If you would like to help us put more manuals online support us.

Supporters of CBTricks.com paid for the hosting so you would have this file.

CBTricks.com is a non-commercial personal website was created to help promote the exchange of service, modification, technically oriented information, and historical information aimed at the Citizens Band, GMRS (CB "A" Band), MURS, Amateur Radios and RF Amps.

CBTricks.com is not sponsored by or connected to any Retailer, Radio, Antenna Manufacturer or Amp Manufacturer, or affiliated with any site links shown in the links database. The use of product or company names on my web site is not endorsement of that product or company.

If your company would like to provide technical information to be featured on this site I will put up on the site as long as I can do it in a non-commercial way.

The site is supported with donation from users, friends and selling of the Galaxy Service Manual CD to cover some of the costs of having this website on the Internet instead of relying on banner ads, pop-up ads, commercial links, etc. to pay my costs. Thus I do not accept advertising banners or pop-up/pop-under advertising or other marketing/sales links or gimmicks on my website.

ALL the money from donations is used for CBTricks.com I didn't do all the work to make money (I have a day job). I all didn't do all this work for someone else to make money also, for example the ebay CD sellers.

All Trademarks, Logos, and Brand Names are the property of their respective owners.
This information is not provided by, or affiliated in any way with any radio or antenna Manufacturers.
Thank you for any support you can give.

Component Outline
Main P.C. Board

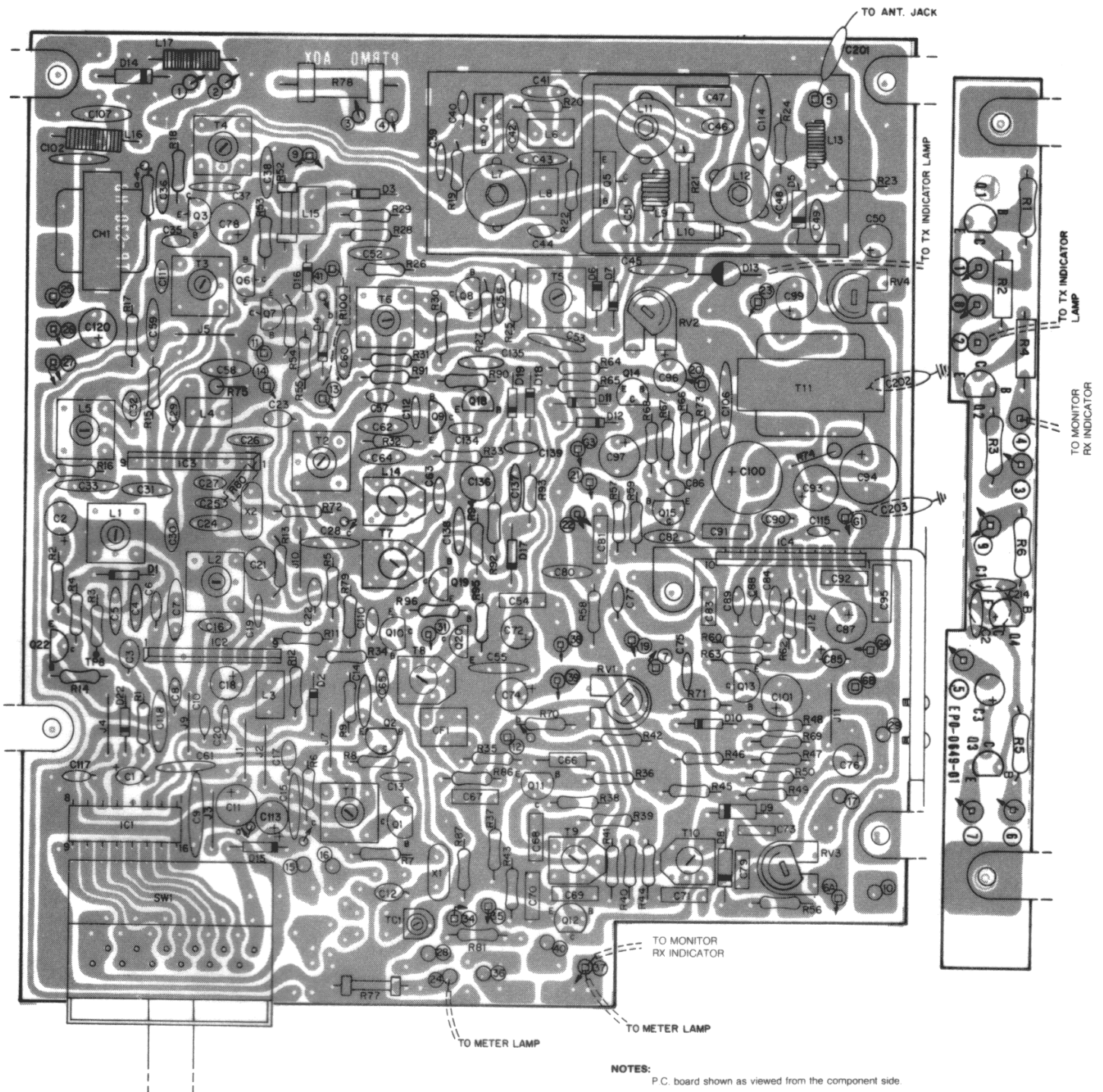
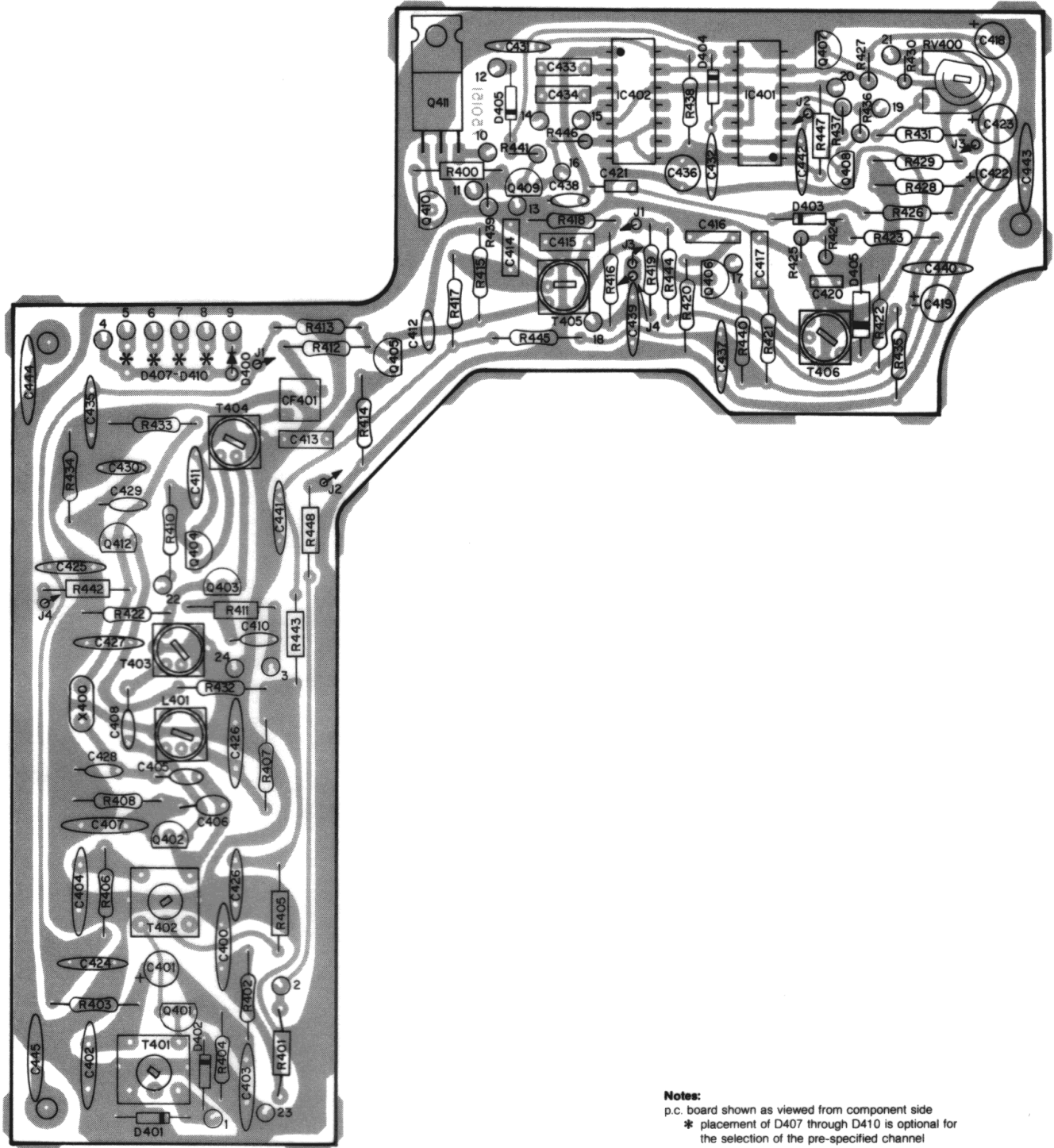


Figure 4-1. Component Outline, Main P.C. Board

**Component Outline
Monitor Receiver P.C. Board**





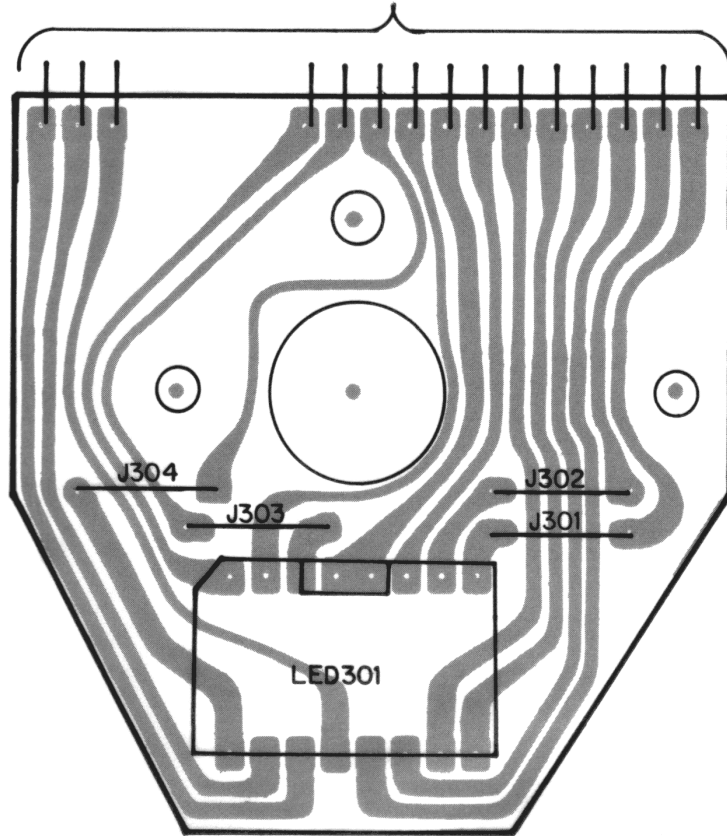
Notes:
 p.c. board shown as viewed from component side
 * placement of D407 through D410 is optional for
 the selection of the pre-specified channel

Figure 4-2. Component Outline, Monitor Receiver P.C. Board



**Component Outline
LED P.C. Board**

TO CHANNEL SELECTOR P.C. BOARD



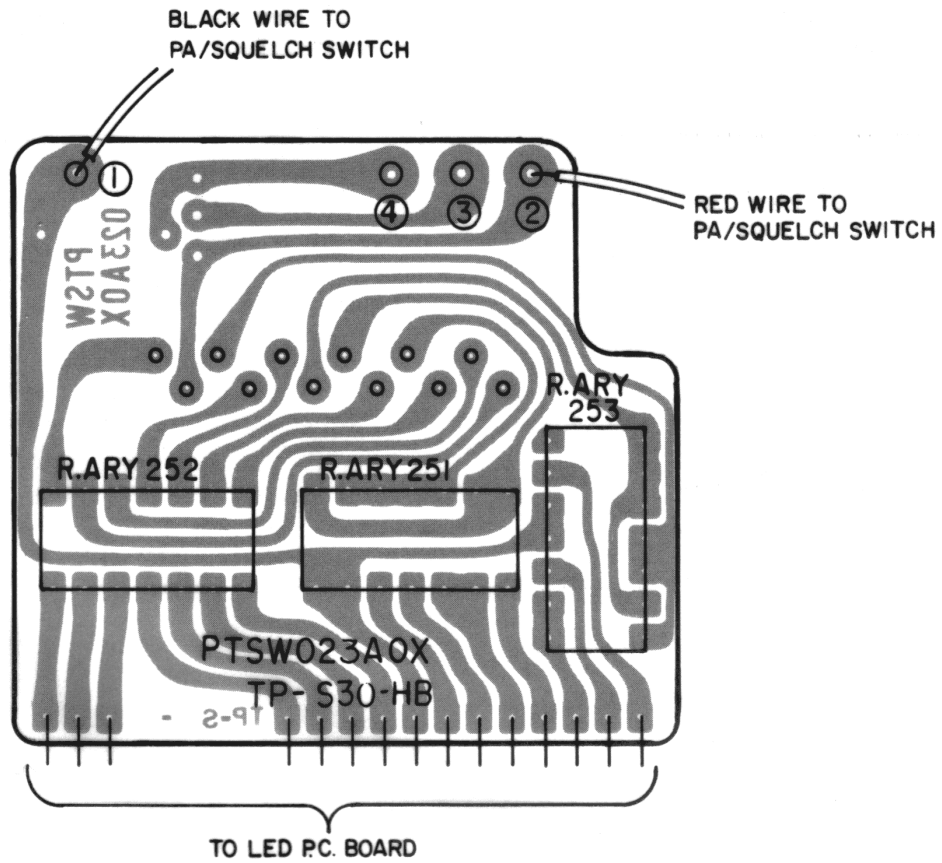
NOTES:

P.C. board shown as viewed from the component side.

Figure 4-3. Component Outline, LED P.C. Board



**Component Outline
Switch P.C. Board**



NOTES:

P.C. board shown as viewed from component side.

Figure 4-4. Component Outline, Switch P.C. Board

Parts List

Main P.C. Board

Reference Designator	Description	Part No.
	main p.c. board, complete	AP-TBM051FT
	main p.c. board, plated and drilled	PT-BM051AOX
C1	.1uF, 10V, arox	CD-A1AOR1ME
C2	10uF, 16V, electrolytic	CE-ED100ZMN
C3	.22uF, 10V, arox	CD-A1AR22ME
C4	68pF, 50V, ceramic	CC-CB680KPM
C5	.01uF, 50V, ceramic	CK-CB103PEM
C6	22pF, 50V, ceramic	CC-CB220KPM
C7	330pF, 50V, ceramic	CC-CB331KOM
C8	150pF, 50V, ceramic	CK-CB151KOM
C9	.047uF, 50V, ceramic	CK-CB473ZFM
C10	47pF, 50V, ceramic	CC-CB470KOM
C11	47uF, 10V, electrolytic	CE-EC470ALN
C12	18pF, 50V, ceramic	CC-CB180KPM
C13	1000pF, 50V, mylar	CQ-MB102KCH
C14	68pF, 50V, ceramic	CC-CB680KOM
C15	.01uF, 50V, ceramic	CK-CB103PEM
C16	33pF, 50V, ceramic	CC-CB320KPM
C17	47pF, 50V, ceramic	CC-CB470KPM
C18	1uF, 50V, electrolytic	CE-EG010ALN
C19	1000pF, 50V, mylar	CQ-MB102KCH
C20	1000pF, 50V, mylar	CQ-MB102KCH
C21	1000pF, 100V, styroflex	CQ-SC102KEF
C22	2pF, 50V, ceramic	CC-CB020COM
C23	7pF, 50V, ceramic	CC-CB070DOM
C24	33pF, 50V, ceramic	CC-CB330KPM
C25	4pF, 50V, ceramic	CC-CB040CPM
C26	330pF, 100V, styroflex	CQ-SC331KEF
C27	390pF, 50V, ceramic	CK-CB391KBM
C28	.01uF, 50V, ceramic	CK-CB103PEM
C29	68pF, 50V, ceramic	CC-CB680KOM
C30	56pF, 50V, ceramic	CC-CB560KOM
C31	.01uF, 50V, ceramic	CK-CB103PEM
C32	2pF, 50V, ceramic	CC-CB020COM
C33	.01uF, 50V, ceramic	CK-CB103PEM
C34	not used	
C35	68pF, 50V, ceramic	CC-CB680KOM
C36	.01uF, 50V, ceramic	CK-CB103PEM
C37	100pF, 50V, ceramic	CC-CB101KPM
C38	.01uF, 50V, ceramic	CK-CB103PEM
C39	.01uF, 50V, mylar	CQ-MB103KCH
C40	330pF, 50V, ceramic	CK-CB331KBM
C41	.01uF, 50V, ceramic	CK-CB103PEM
C42	120pF, 50V, ceramic	CC-CB121KOM
C43	220pF, 50V, ceramic	CC-CB221KOM
C44	120pF, 50V, ceramic	CC-CB121KOM
C45	.01uF, 50V, ceramic	CK-CB103PEM
C46	120pF, 50V, ceramic	CC-CB121KOM
C47	270pF, 500V, mica	CM-SD2/1KCS
C48	2pF, 500V, ceramic	CC-CE020COM
C49	.0047uF, 50V, ceramic	CK-CB472PEM

Reference Designator	Description	Part No.
C50	1uF, 50V, electrolytic	CE-EG010ALN
C51	27pF, 50V, ceramic	CC-CB270KOM
C52	.01uF, 50V, ceramic	CK-CB103PEM
C53	.047uF, 50V, ceramic	CK-CB473ZFM
C54	.047uF, 50V, mylar	CQ-MB473KCH
C55	.047uF, 50V, ceramic	CK-CB473ZFM
C56	.01uF, 50V, ceramic	CK-CB103PEM
C57	10pF, 50V, ceramic	CC-CB100DOM
C58	.01uF, 50V, ceramic	CK-CB103PEM
C59	.01uF, 50V, ceramic	CK-CB103PEM
C60	.01uF, 50V, ceramic	CK-CB103PEM
C61	.01uF, 50V, ceramic	CK-CB103PEM
C62	.01uF, 50V, ceramic	CK-CB103PEM
C63	1pF, 50V, ceramic	CC-CB020COM
C64	.01uF, 50V, ceramic	CK-CB103PEM
C65	18pF, 50V, ceramic	CC-CB180KPM
C66	2.2pF, 500V, minic	CG-2H2R2KNN
C67	.047uF, 50V, mylar	CQ-MB473KCH
C68	.047uF, 50V, mylar	CQ-MB473KCH
C69	.047uF, 50V, mylar	CQ-MB473KCH
C70	.047uF, 50V, mylar	CQ-MB473KCH
C71	.047uF, 50V, mylar	CQ-MB473KCH
C72	10uF, 16V, electrolytic	CE-ED100ALN
C73	6800pF, 50V, mylar	CQ-MB682KCH
C74	3.3uF, 25V, electrolytic	CE-EE3R3ALN
C75	4700pF, 50V, mylar	CQ-MB472KCH
C76	1uF, 50V, electrolytic	CE-EG010ALN
C77	.0015uF, 50V, mylar	72A376
C78	47uF, 16V, electrolytic	CE-ED470ALN
C79	.022uF, 50V, mylar	CQ-MB223KCH
C80	2200pF, 50V, ceramic	CC-CB222KBM
C81	.022uF, 50V, mylar	CQ-MB223KCH
C82	220pF, 50V, ceramic	CC-CB221KOM
C83	.01uF, 50V, mylar	CQ-MB203KCH
C84	390pF, 50V, ceramic	CK-CB391KBM
C85	5.6uF, 25V, tantalum	CS-SE5R6MDN
C86	.47uF, 10V, arox	CD-A1AR47ME
C87	33uF, 6.3V, electrolytic	CE-EB330ALN
C88	68pF, 50V, ceramic	CC-CB680KOM
C89	68pF, 50V, ceramic	CC-CB680KOM
C90	470pF, 50V, ceramic	CK-CB471KBM
C91	.068uF, 50V, mylar	CQ-MB683KCH
C92	.022uF, 50V, ceramic	CK-CB223ZFM
C93	47uF, 16V, electrolytic	CE-ED470ALN
C94	220uF, 16V, electrolytic	CE-AD221ZLS
C95	.068uF, 50V, mylar	CQ-MB683KCH
C96	3.3uF, 25V, electrolytic	CE-EE3R3ALN
C97	47uF, 10V, electrolytic	CE-EC470ALN
C98	not used	
C99	47uF, 25V, electrolytic	CE-AE470ZLS
C100	1000uF, 16V, electrolytic	CE-ED102ZUN
C101	33uF, 6.3V, electrolytic	CE-EB330ALN
C102	.01uF, 50V, ceramic	CK-CB103PEM

Reference Designator	Description	Part No.
C103 thru		
C105	not used	
C106	.047uF, 50V, ceramic	CK-CB473ZFM
C107	.047uF, 50V, ceramic	CK-CB473ZFM
C108 thru		
C109	not used	
C110	18pF, 50V, ceramic	CC-CB180KOM
C111	82pF, 50V, ceramic	CC-CB820KOM
C112	39pF, 50V, ceramic	CC-CB390KOM
C113	.01uF, 50V, ceramic	CK-CB103PEM
C114	390pF, 500V, ceramic	CC-CE391KOM
C115	18pF, 50V, ceramic	CC-CB180KOM
C116	not used	
C117	4700pF, 50V, ceramic	CK-CB472KBM
C118	.022uF, 50V, ceramic	CK-CB223ZFM
C119	not used	
C120	33uF, 16V, electrolytic	CE-ED330ALN
C121 thru		
C133	not used	
C134	3pF, 50V, ceramic	CC-CB030DOM
C135	220pF, 50V, ceramic	CC-CB221KOM
C136	.0033uF, 100V, styroflex	CQ-SC332KEF
C137	.01uF, 50V, ceramic	CK-CB103PEM
C138	220pF, 50V, ceramic	CC-CB221KOM
CF1	4 element ceramic filter	FB-R455A08M
CH1	choke coil	LJ-119H001Y
CT1	20pf, trimmer capacitor	CT-Z7200H01
D1	ITT410, silicon	QD-CTT410XQ
D2	MZ205, zener	QD-ZM205XE
D3	RD9.1E, zener	QD-ZRD9EXAA
D4	1S1555, silicon	QD-SS1555XT
D5	1N60, germanium	QD-G1N60XXT
D6	1S1555, silicon	QD-SS1555XT
D7	1S1555, silicon	QD-SS1555XT
D8	1N60, germanium	QD-G1N60XXT
D9	1N60, germanium	QD-G1N60XXT
D10	1S1555, silicon	QD-SS1555XT
D11	1S1555, silicon	QD-SS1555XT
D12	1S1555, silicon	QD-SS1555XT
D13	V06C, silicon	QD-SV06CXXB
D14	1S1885, silicon	QD-SS1885XT
D15	1S1555, silicon	QD-SS1555XT
D16	1S1555, silicon	QD-SS1555XT
D17	1S1555, silicon	QD-SS1555XT
D18	1N60, germanium	QD-G1N60XXT
D19	1N60, germanium	QD-G1N60XXT
D20 thru		
D21	not used	
D22	1S1555, silicon	QD-SS1555XT
D23	1N4148, silicon	76A037

Reference Designator	Description	Part No.
D24	1N4148, silicon	76A037
D25	1N4148, silicon	76A037
D26	1N4148, silicon	76A037
D27	1N4148, silicon	76A037
D28	1N4148, silicon	76A037
D28	1N4148, silicon	76A037
D29	1N4148, silicon	76A037
IC1	PLL02A	QQ-OPLL02A0
IC2	TA7310P	QQ-MC3001AT
IC3	TA7310P	QQ-MC3001AT
IC4	BA521A	QQ-MB521AX
L1	rf coil, 18 MHz	TR-10DD003S
L2	rf coil, 37 MHz	TR-10MB003T
L3	rf coil, 68uH, peaking	LF-680KD01N
L4	rf coil, 1 uH	LF-1R0KD01N
L5	rf coil, 27 MHz	TR-10CB002M
L6	rf coil, 2.2uH, peaking	LF-2R2KD01N
L7	rf coil, 27 MHz	TR-A5CZ001M
L8	rf coil, 68uH, peaking	LF-680KD01N
L9	rf coil, .55uH	LA-1KE1011A
L10	rf coil, 1.0uH	LD-ADX3825M
L11	rf coil, 27 MHz	TR-A5CZ002M
L12	rf coil, 27 MHz	TR-A5CZ003M
L13	rf coil, .40uH	LA-1JG1010A
L14	rf coil, 10.7 MHz	TR-07MB008N
L15	rf coil, 68uH, peaking	LF-680DK01N
L16	rf coil, .75uH	LD-ADB4024B
L17	rf coil, .75uH	LD-ADB4024B
Q1	2SC710DE	QT-C0710XEE
Q2	2SC710DE	QT-C0710XEE
Q3	2SC1687	QT-C1687XAN
Q4	2SC1846QRS	QT-C1846XAN
Q5	2SC1306	QT-C1306XZA
Q6	2SC1318QR	QT-C1318XDN
Q7	2SA719PQR	QT-A0719XHN
Q8	2SC1047BC	QT-C1047XBN
Q9	2SC1359BC	QT-C1359XBN
Q10	2SC710D	QT-C0710XBE
Q11	2SC710D	QT-C0710XBE
Q12	2SC829BC	QT-C0829XEN
Q13	2SC828P	QT-C0828XAN
Q14	2SA7190	QT-A0719XAN
Q15	2SC945(L)PQ	QT-C0945LAA
Q16 thru		
Q17	not used	
Q18	2SC829C	QT-C0829XBN
Q19	2SA733PQ	QT-A0733XDA
Q20	2S1327TU	QT-C1327XAN
Q21	not used	
Q22	2SC900UE	QT-C0900XEA

Reference Designator	Description	Part No.
----------------------	-------------	----------

NOTE: all resistors 5%, ¼ watt, carbon film unless otherwise noted.

R1	3.3k	RD-25RJ332N
R2	470	RD-25RJ471N
R3	22k	RD-25RJ223N
R4	47k	RD-25RJ473N
R5	68	RD-25RJ680N
R6	680	RD-25RJ681N
R7	27k	RD-25RJ273N
R8	15k	RD-25RJ153N
R9	1.5k	RD-25RJ152N
R10	not used	
R11	82	RD-25RJ820N
R12	2.2k	RD-25RJ222N
R13	150	RD-25RJ151N
R14	1M	RD-25RJ105N
R15	47	RD-25RJ470N
R16	100	RD-25RJ101N
R17	5.6k	RD-25RJ562N
R18	68	RD-25RJ680N
R19	100	RD-25RJ101N
R20	220	RD-25RJ221N
R21	10, 5%, ½w, metal oxide film	RX-HAPJ100B
R22	68	RD-25RJ680N
R23	47k	RD-25RJ473N
R24	680	RD-25RJ681N
R25	330	RD-25RJ331N
R26	1k	RD-25RJ102N
R27	680	RD-25RJ681N
R28	47k	RD-25RJ473N
R29	3.3k	RD-25RJ332N
R30	100	RD-25RJ101N
R31	1.8k	RD-25RJ182N
R32	560	RD-25RJ561N
R33	470	RD-25RJ471N
R34	470k	RD-25RJ474N
R35	1k	RD-25RJ102N
R36	4.7k	RD-25RJ472N
R37	470	RD-25RJ471N
R38	47k	RD-25RJ473N
R39	220	RD-25RJ221N
R40	3.9k	RD-25RJ392N
R41	15k	RD-25RJ153N
R42	33k	RD-25RJ333N
R43	220	RD-25RJ221N
R44	47	RD-25RJ470N
R45	22k	RD-25RJ223N
R46	270k	RD-25RJ274N
R47	47k	RD-25RJ473N
R48	68k	RD-25RJ683N
R49	33k	RD-25RJ333N
R50	47k	RD-25RJ473N
R51	10k	RD-25RJ103N
R52	10, ½ watt, metal oxide film	RX-HAPJ100B

Reference Designator	Description	Part No.
R53	1k	RD-25RJ102N
R54	220	RD-25RJ221N
R55	10k	RD-25RJ103N
R56	820	RD-25RF821N
R57	27k	RD-25RJ273N
R58	3.3k	RD-25RJ332N
R59	3.3k	RD-25RJ332N
R60	2.2k	RD-25RJ222N
R61	not used	
R62	10	RD-25RJ100N
R63	10k	RD-25RJ103N
R64	47	RD-25RJ470N
R65	1k	RD-25RJ102N
R66	4.7k	RD-25RJ472N
R67	18k	RD-25RJ183N
R68	1k	RD-25RJ102N
R69	22k	RD-25RJ223N
R70	22k	RD-25RJ223N
R71	1.8k	RD-25RJ182N
R72	not used	
R73	4.7k	RD-25RJ472N
R74	100	RD-25RJ101N
R75	4.7k	RD-25RJ472N
R76	not used	
R77	270, ½ watt, metal oxide film	RG-HANJ271B
R78	15, 2 watt, metal oxide film	RX-2ANJ150B
R79	1k	RD-25RJ102N
R80	6.8k, solid	RC-14GK682N
R81	1.5k	RD-25RJ152N
R82	4.7k	RD-25RJ472N
R83 thru		
R89	not used	
R90	100k	RD-25RJ104N
R91	1k	RD-25RJ102N
R92	560k	RD-25RJ561N
R93	100k	RD-25RJ104N
R94	820k	RD-25RJ824N
R95	4.7k	RD-25RJ472N
R96	22k	RD-25RJ223N
R97 thru		
R99	not used	
R100	3.3k	RC-14GK332N
R101 thru		
R110	not used	
R111	2.7k	RD-25RJ272N
RV1	10k, semi-fixed resistor	RP-GNB10301
RV2	5k semi-fixed resistor	RP-GNB50202
RV3	20k semi-fixed resistor	RP-GNB20301
RV4	20k semi-fixed resistor	RP-GNB20301
SW1	switch rotary	SR-194020W
T1	rf transformer	TR-10DB002S

Reference Designator	Description	Part No.
T2	rf transformer	TR-10MB005S
T3	rf transformer	TR-10CB001S
T4	rf transformer	TR-10CP005S
T5	rf transformer	TR-10MP003T
T6	rf transformer	TR-10CA003T
T7	rf transformer	TR-07MB008N
T8	if transformer.....	TR-07LA004N
T9	if transformer.....	TR-07LA005N
T10	if transformer.....	TR-07LA023N
T11	audio transformer.....	TB-G25B001W
X1	crystal oscillator 10.24000 MHz	XA-S1B9001T
X2	crystal oscillator 10.69500 MHz	XA-S1B9002T
Quantity	Description	Part No.
2	crystal spacer.....	VK111SC001
1	heat sink, IC4	ML-454AD002
1	heat sink, IC4	MS-327AD005

Monitor Receiver P.C. Board

Reference Designator	Description	Part No.
	monitor receiver p.c. board, plated and drilled	75A151
C400	.01uF, 25V, ceramic.....	72A440
C401	1uF, 50V, electrolytic	72A430
C402	.01uF, 25V, ceramic.....	72A440
C403	.01uF, 25V, ceramic.....	72A440
C404	.01uF, 25V, ceramic.....	72A440
C405	27pF, 50V, ceramic	72A404
C406	39pF, 50V, ceramic	72A407
C407	.01uF, 25V, ceramic.....	72A440
C408	2pF, 50V, ceramic	72A444
C409	.01uF, 25V, ceramic.....	72A440
C410	10pF, 50V, ceramic	72A399
C411	330pF, 50V, ceramic	72A416
C412	2pF, 50V, ceramic	72A444
C413	.047uF, 50V, mylar	72A443
C414	.047uF, 50V, mylar	72A443
C415	.047uF, 50V, mylar	72A443
C416	.047uF, 50V, mylar	72A443
C417	.047uF, 50V, mylar	72A443
C418	10uF, 16V, electrolytic.....	72A434
C419	3.3uF, 25V, electrolytic	72A431
C420	.0047uF, 50V, mylar	72A425
C421	.0047uF, 50V, mylar	722425
C422	1uF, 50V, electrolytic.....	72A430
C423	33uF, 6.3V, electrolytic	72A435
C424	.047uF, 50V, ceramic.....	72A419
C426	.047uF, 50V, ceramic.....	72A419
C427	.047uF, 50V, ceramic.....	72A419

Reference Designator	Description	Part No.
C428	22pF, 50V, ceramic	72A403
C429	560pF, 50V, ceramic	72A421
C430	68pF, 50V, ceramic	72A409
C431	.047uF, 50V, ceramic.....	72A419
C432	.047uF, 50V, ceramic.....	72A419
C433	.047uF, 50V, mylar	72A443
C434	.047uF, 50V, mylar	72A443
C435	.047uF, 50V, ceramic.....	72A419
C436	3.3uF, 25V, electrolytic	72A431
C437	.047uF, 50V, ceramic.....	72A419
C438	.0047uF, 50V, mylar	72A425
C439	.047uF, 50V, ceramic.....	72A419
C440	.047uF, 50V, ceramic.....	72A419
C441	.047uF, 50V, ceramic.....	72A419
C442	.047uF, 50V, ceramic.....	72A419
C443	.01uF, 50V, ceramic.....	72A440
C444	.01uF, 50V, ceramic.....	72A440
C445	.01uF, 50V, ceramic.....	72A440
CF401	ceramic filter, 455 kHz	78A067
D401	1N4148	76A037
D402	1N4148	76A037
D403	1N4148	76A037
D404	1N4148	76A037
D405	1N60	76A057
D406	1N4148	76A037
IC401	4001, 2 input, NOR IC.....	76A114
IC402	4066, IC multiplexer.....	76A333
L401	rf transformer, 10.7 MHz.....	73A041
Q401	MPS6514	76A140
Q402	MPS6514	76A140
Q403	MPS6513	76A139
Q404	2N5088	76A149
Q405	MPS6514	76A140
Q406	MPS6514	76A140
Q407	MPS5172	76A138
Q408	2N5088	76A149
Q409	MPS5172	76A138
Q410	MPS3702	76A141
Q411	TIP-30	76A319
Q412	MPS6513	76A139

NOTE: all resistors 5%, ¼ watt, carbon film unless otherwise noted.

R400	100k	72A612
R401	100	72A540
R402	2.2k	72A572
R403	680	72A560
R404	1.5k	72A568
R405	100	72A540

Reference Designator	Description	Part No.
R406	1.8k	72A570
R407	470	72A556
R408	1k	72A564
R409	1k	72A564
R410	22k	72A596
R411	100k	72A612
R412	1k	72A564
R413	4.7k	72A580
R414	470	72A556
R415	47k	72A604
R416	1.5k	72A568
R417	220	72A548
R418	330	72A552
R419	27k	72A598
R420	220	72A548
R421	47	72A532
R422	22k	72A596
R423	270k	72A622
R424	47k	72A604
R425	68k	72A608
R426	47k	72A604
R427	100k	72A612
R428	33k	72A600
R429	22k	72A596
R430	1.8k	72A570
R431	18k	72A594
R432	1k	72A564
R433	27k	72A598
R434	1.5k	72A568
R435	5.6k	72A582
R436	10k	72A588
R437	100k	72A612
R438	100	72A540
R439	1k	72A564
R440	47	72A532
R441	10k	72A588
R442	100k	72A612
R443	100	72A540
R444	47	72A532
R445	100	72A540
R446	100	72A540
R447	100k	72A612
R448	100	72A540
RV400	10k potentiometer	72A398
T401	transformer, 27 MHz	73A044
T402	transformer, 27 MHz	73A045
T403	transformer, 10.7 MHz	73A041
T404	transformer, 455 kHz	73A038
T405	transformer, 455 kHz	73A039
T406	transformer, 455 kHz	73A040
X400	crystal, 16.37 MHz	78A076

LED P.C. Board

Reference Designator	Description	Part No.
	LED p.c. board, complete	AP-TLD015AA
	LED p.c. board, plated and drilled	PT-LD015AOX
LED	SL122	QL-#SL1222C

Lamp Control P.C. Board

Reference Designator	Description	Part No.
	lamp control p.c. board, complete	AP-TZZ005AA
	lamp control p.c. board, drilled and plated	PT-ZZ005AOX
C1	.01uF, 50V, ceramic	CK-CB103PEM
C2	.01uF, 50V, ceramic	CK-CB103PEM
C3	10uF, 16V, electrolytic	CE-ED100ALN
Q1	2SC945ARQ	QT-C0945ADA
Q2	2SC945ARQ	QT-C0945ADA
Q3	2SC945AR	QT-C0945ACA
Q4	2SC945ARQ	QT-C0945ADA

NOTE: all resistors are 5%, ¼ watt, carbon film unless otherwise noted.

R1	10k	RD-14TJ103N
R2	270, ½ W, solid	RC-12GK271N
R3	15k	RD-14TJ153N
R4	330, ½W, solid	RC-12GK331N
R5	330k	RD-14TJ334N
R6	100k	RD-14TJ104N

Switch P.C. Board

Reference Designator	Description	Part No.
	switch p.c. board, complete	AP-TSW023AA
	switch p.c. board, drilled and plated	PT-SW023AOX
	1.8k, 1%, ¼W, resistor array	RA-C182M07N

Chassis Mounted Components

Reference Designator	Description	Part No.
C201	180pF, 500V, mica	CM-SD181KCS
C201B	7pF, 500V, ceramic	CC-DE070DOM
C202	.01uF, 50V, ceramic	CK-CB103PEM
C203	.01uF, 50V, ceramic	CK-DB103PEM
C204	.01uF, 50V, ceramic	CK-DB103PEM
C205	.047uF, 50V, ceramic	CK-DB473ZFM

Reference Designator	Description	Part No.
C206	.01uF, 50V, ceramic	CK-DB103PEM
C207	.01uF, 50V, ceramic	CK-DB103PEM
C208	.0047uF, 50V, ceramic	CK-DB472PEM
C209	.0047uF, 50V, ceramic	CK-DB472PEM
C210	.0047uF, 50V, ceramic	CK-DB472PEM
C211	.0047uF, 50V, ceramic	CK-DB472PEM
C212	.0047uF, 50V, ceramic	CK-DB472PEM
C213	.0047uF, 50V, ceramic	CK-DB472PEM
C214	1 uF, 50V, electrolytic	CE-AG010ALN
J1	jack, 2-pin, antenna	YJ-C02S002Z
J2	jack, 5-pin, DIN, microphone	YJ-D05S001Z
J3	jack, 3-pin, PA	YJ-T03S003Z
J4	jack, 3-pin, external speaker	YJ-T03S003Z
J5	jack, 2-pin, DC	YJ-B02S001U
D201	1N4001 diode	76A076
M/PL3	meter/lamp	ZM-J2030N07
PL1	lamp, monitor	ZP-A064118U
PL2	lamp, transmitter	ZP-A064119U
R201	100k	RD-14TJ104N
S2	switch, toggle	ST020201ZM
S3	switch, rotary	SR-0304103E
VR1, VR3/S1	50k, 100k, potentiometer, ganged (volume, rf gain, on/off switch)	RV-PB104B01
VR2, VR4	10k, 10, potentiometer, ganged (squelch)	RV-PB103B01
	speaker	ZQ-A0920801

Mechanical Parts

Part Number	Description	Qty
MZ-421SZ003	bracket, meter	1
ML-121SZ007	bracket, speaker	4
MU-276SW002	bracket, mobile mounting	1
MC-473SZ002	bracket p.c. board	1
MU-773SM053	case, top	1
MU-773SM054	case, bottom	1
MU-677SZ049	chassis	1
MX-315SZ001	clamp	1
AC-DC036GEA	cord, power	1
AM-2706#01	excutecheon assembly	1
ASM-2683B#01	frame	1
MB-762SZ053	front panel	1
MZ-331SZ002	hanger, microphone	1
VN-176SB006	knob, channel selector	1
VN-274SM001	knob, volume and squelch	2
VN-176SB002	knob, rf gain, switch	2
VN-276SB008	knob, CB-PA	1

Accessory Parts

Part Number	Description	Qty
BT-PT5013AN	screw, truss head tapping, unit mounting M5x13	4
BT-PP4010BZ	screw, pan head tapping, unit mounting M4x10	2
MF-284SN001	thumb screw	2

HY-GAIN DE PUERTO RICO, INC.

**P.O. Box 68 State Hwy 31, Km. 4.0
Naguabo, Puerto Rico 00718**