

This Manual is provided by
CBTricks.com

Someone who wanted to help you repair your equipment
scanned this manual.

If you would like to help us put more manuals online support us.

Supporters of CBTricks.com paid for the hosting so you would have this file.

CBTricks.com is a non-commercial personal website was created to help promote the exchange of service, modification, technically oriented information, and historical information aimed at the Citizens Band, GMRS (CB "A" Band), MURS, Amateur Radios and RF Amps.

CBTricks.com is not sponsored by or connected to any Retailer, Radio, Antenna Manufacturer or Amp Manufacturer, or affiliated with any site links shown in the links database. The use of product or company names on my web site is not endorsement of that product or company.

If your company would like to provide technical information to be featured on this site I will put up on the site as long as I can do it in a non-commercial way.

The site is supported with donation from users, friends and selling of the Galaxy Service Manual CD to cover some of the costs of having this website on the Internet instead of relying on banner ads, pop-up ads, commercial links, etc. to pay my costs. Thus I do not accept advertising banners or pop-up/pop-under advertising or other marketing/sales links or gimmicks on my website.

ALL the money from donations is used for CBTricks.com I didn't do all the work to make money (I have a day job). I all didn't do all this work for someone else to make money also, for example the ebay CD sellers.

All Trademarks, Logos, and Brand Names are the property of their respective owners.
This information is not provided by, or affiliated in any way with any radio or antenna Manufacturers.
Thank you for any support you can give.



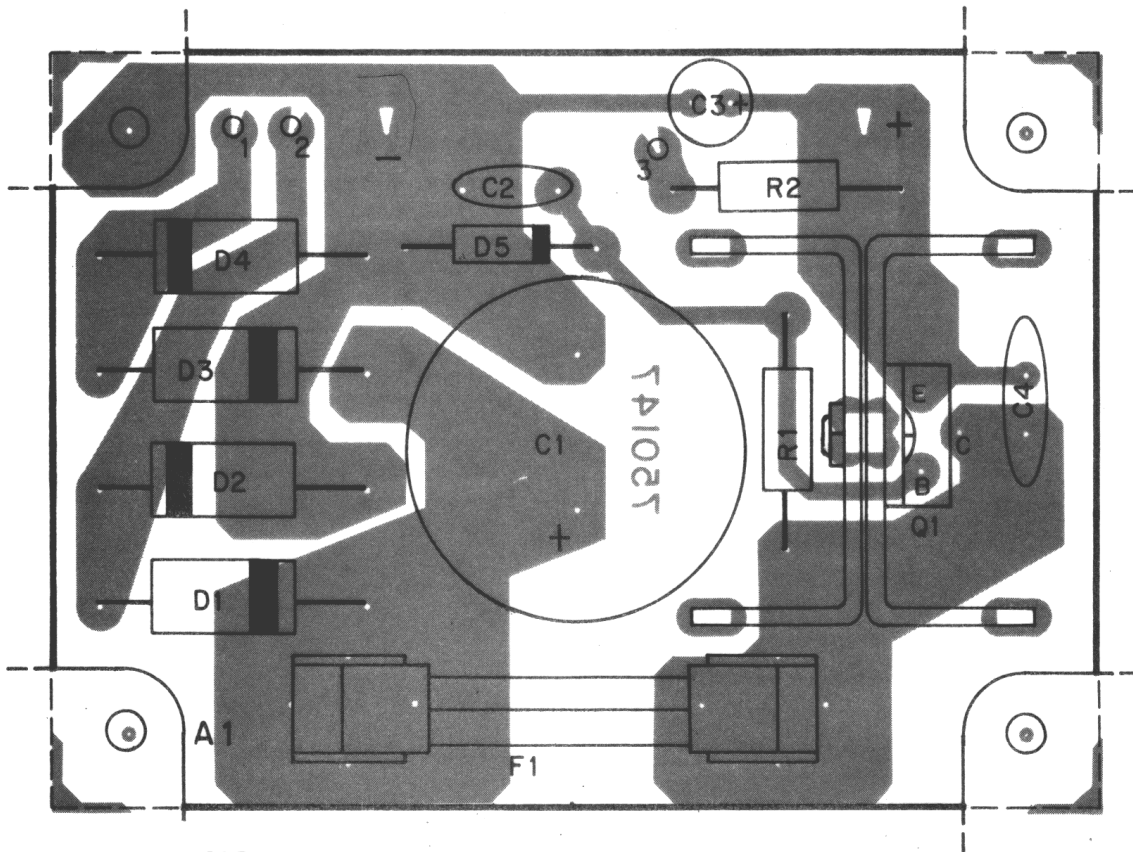
**Component Outlines,
Power Regulator P.C. Board (A-1)
and SWR P.C. Board (A-2)**

**WIRING CHART
POWER REGULATOR P.C. BOARD**

Pin No.	Wiring Connection
1	yellow wire to power transformer
2	yellow wire to power transformer
3	red wire to light on power switch
-	black wire to pin 2 on main p.c. board
+	red wire to pin 1 on main p.c. board
	red wire to pin 13 on channel selector p.c. board

**WIRING CHART
SWR P.C. BOARD**

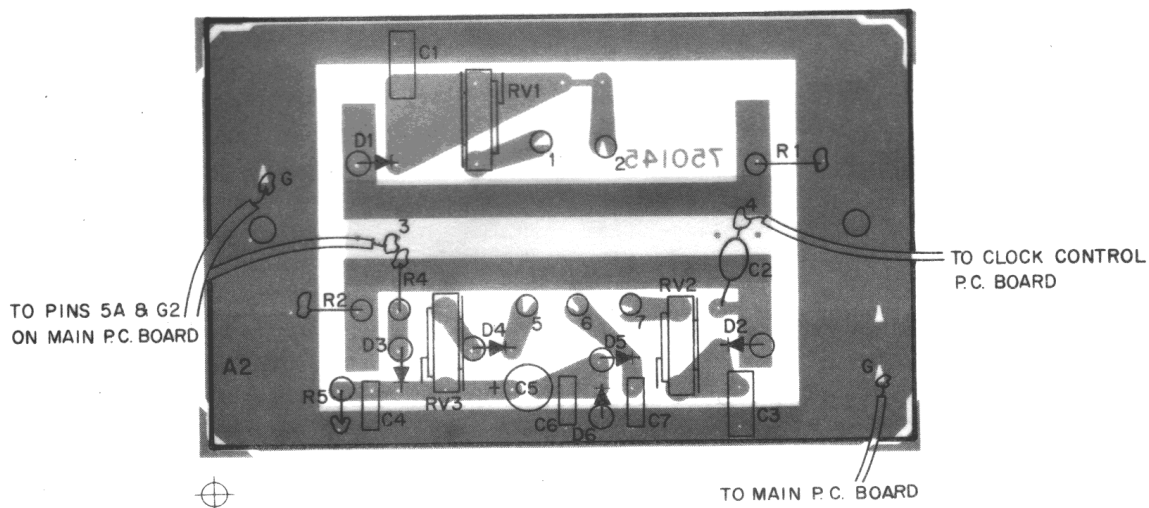
Pin No.	Wiring Connection
1	green wire to swr switch
2	brown wire to pin 11 on edge control p.c. board
3	shielded wire/clear portion to pin 5A on main p.c. board
4	red wire to pin 5 on clock control p.c. board
5	orange wire to pin 9 on edge control p.c. board
6	yellow wire to mod cal switch
7	black wire to pin 12 on edge control p.c. board
G	shielded wire/shielded portion to pin G2 on main p.c. board
	black wire to one end of R185 slot



NOTES:

1. P.C. board shown as viewed from component side.
2. Dashed outline component—mounted on foil side.
3. See wiring chart for pin connections.

Figure 4-2. Component Outline, Power Regulator P.C. Board (A-1)



NOTES:

1. P.C. board shown as viewed from component side.
2. Dashed outline component—mounted on foil side.
3. See wiring chart for pin connection.

Figure 4-3. Component Outline, SWR P.C. Board (A-2)

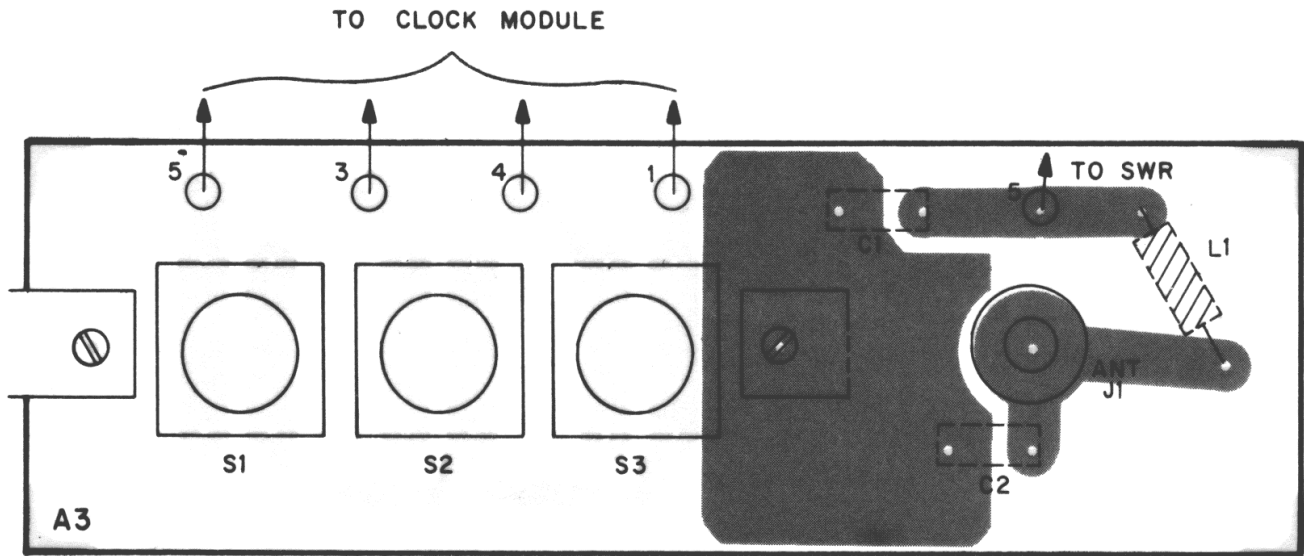
**Component Outlines,
Clock Control P.C. Board (A-3)
and Edge Control P.C. Board (A-4)**

**WIRING CHART
CLOCK CONTROL P.C. BOARD**

Pin No.	Wiring Connection
1	black wire to clock module board
3	orange wire to clock module board
4	brown wire to clock module board
5	purple wire to clock module board
5	red wire to pin 4 on swr p.c. board

**EDGE CONTROL P.C. BOARD
WIRING CHART**

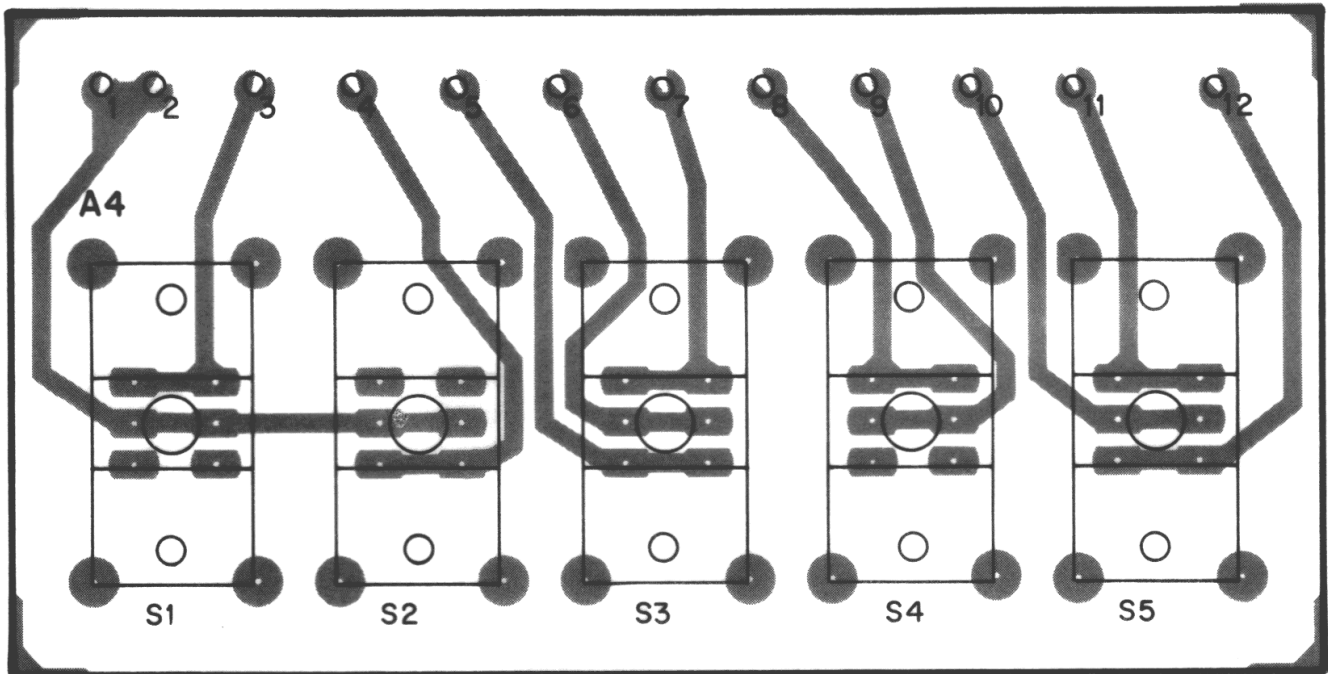
Pin No.	Wiring Connection
1	black wire to mic gain switch
2	black wire to squelch switch
3	white wire to pin 31 on main p.c. board
4	gray wire to pin 29 on main p.c. board
5	purple wire to pin 9 on main p.c. board
6	blue wire to pin 25 on main p.c. board
7	green wire to pin 27 on main p.c. board
8	yellow wire to mod cal switch
9	orange wire to pin 5 on swr p.c. board
10	red wire to swr switch
11	brown wire to pin 2 on swr switch
12	black wire to pin 7 on swr p.c. board



NOTES:

1. P.C. board shown as viewed from component side.
2. Dashed outline component—mounted on foil side.
3. See wiring chart for pin connections.

Figure 4-4. Component Outline, Clock Control P.C. Board (A-3)



NOTES:

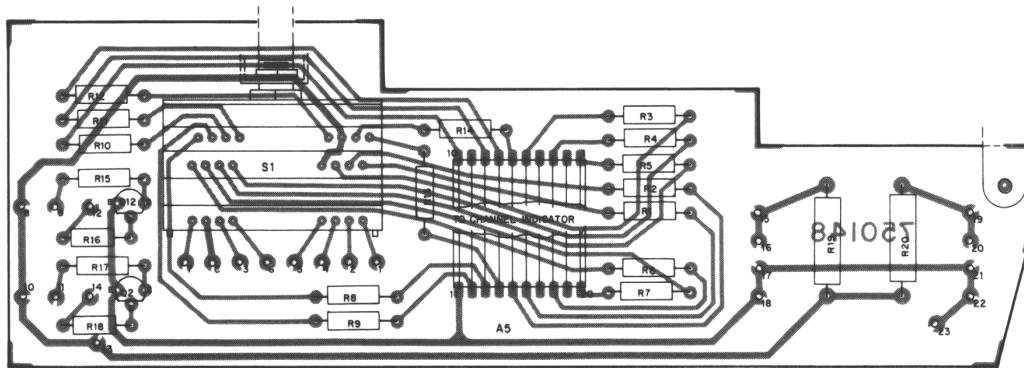
1. P.C. board shown as viewed from component side.
2. Dashed outline component—mounted on foil side.
3. See wiring chart for pin connection.

Figure 4-5. Component Outline, Edge Control P.C. Board (A-4)

**Component Outline,
Channel Selector P.C. Board (A-5)**

**WIRING CHART
CHANNEL SELECTOR P.C. BOARD**

Pin No.	Wiring Connection
1	black wire to BO on main p.c. board
2	brown wire to B1 on main p.c. board
3	green wire to B5 on main p.c. board
4	orange wire to B3 on main p.c. board
5	yellow wire to B4 on main p.c. board
6	blue wire to B6 on main p.c. board
7	white wire to one end on J104 slot
8	red wire to PL6 on TX light
9	white wire to PL6 TX light
10	red wire to PL7 RX light
11	white wire to PL7 TX light
12	gray wire to pin 14 on main p.c. board
13	red wire to positive on power regulator p.c. board
14	purple wire to pin 12 on main p.c. board
15	white wire to PL1 swr meter
16	white wire to PL2 on swr meter
17	red wire to PL2 swr meter
18	red wire to PL1 swr meter
19	white wire to PL3 s-meter
20	white wire to PL4 s-meter
21	red wire to PL4 s-meter
22	red wire to PL3 s-meter
23	black wire to s-meter
C	red wire to B2 on main p.c. board



- NOTES:**
1. P.C. board shown as viewed from component side.
 2. Dashed outline component—mounted on foil side.
 3. See wiring chart for pin connection.

Figure 4-6. Component Outline, Channel Selector P.C. Board (A-5)

Parts List

Main P.C. Board

Reference Designator	Description	Part No.
	main p.c. board, complete	87A328
	main p.c. board assy, drilled and plated	75A080
C101	22pF, 50V, ceramic disc	722911
C102	15pF, 50V, ceramic disc	724901
C103	3pF, 50V, ceramic disc	72A900
C104	10uF, 16V, ceramic disc	72A434
C105	.001uF, 16V, ceramic disc	72A849
C106	10pF, 16V, ceramic disc	72A399
C107	.01uF, 25V, ceramic disc	72A440
C108	330pF, 25V, ceramic disc	72A416
C109	330pF, 25V, ceramic disc	72A416
C110	.001uF, 25V, ceramic disc	72A424
C111	.01uF, 25V, ceramic disc	72A426
C112	39pF, 25V, ceramic disc	72A407
C113	.22uF, 50V, ceramic disc	72A452
C114	10uF, 16V, ceramic disc	72A433
C115	.01uF, 50V, ceramic disc	72A451
C116	15pF, 50V, ceramic disc	72A401
C117	.01uF, 50V, ceramic disc	72A426
C118	18pF, 50V, ceramic disc	72A402
C119	(not used)	
C120	560pF, 50V, ceramic disc	72A421
C121	100pF, 50V, ceramic disc	72A412
C112	15pF, 50V, ceramic disc	72A401
C123	.01uF, 50V, ceramic disc	72A440
C124	100pF, 500V, mica	72A441
C125	33pF, 50V, ceramic disc	72A406
C126	15pF, 500V, mica	72A401
C127	56pF, 500V, mica	72A408
C128	(not used)	
C129	.001uF, 500V, mica	72A849
C130	82pF, 500V, mica	72A446
C131	.01uF, 500V, mica	72A440
C132	.001uF, 500V, mica	72A424
C133	.01uF, 500V, mica	72A440
C134	(not used)	
C135	10uF, 16V, electrolytic	72A434
C136	220pF, 16V, electrolytic	72A415
C137	.01uF, 16V, electrolytic	72A440
C138	.01uF, 16V, electrolytic	72A440
C139	3pF, 16V, electrolytic	72A900
C140	2pF, 16V, electrolytic	72A444
C141	68pF, 16V, electrolytic	72A409
C142	.01uF, 16V, electrolytic	72A440
C143	100pF, 16V, electrolytic	72A412
C144	.01uF, 16V, electrolytic	722440
C145	.0022uF, 16V, electrolytic	72A459
C146	470pF, 16V, electrolytic	72A418
C147	.01uF, 16V, electrolytic	72A440
C148	120pF, 16V, electrolytic	72A413
C149	220pF, 16V, electrolytic	72A415
C150	.01uF, 16V, electrolytic	72A440
C151	100pF, 500V, mica	72A441
C152	270pF, 500V, mica	72A442
C153	82pF, 500V, mica	72A410
C154	27pF, 50V, ceramic disc	72A404
C155	.047uF, 50V, ceramic disc	72A419
C156	.01uF, 50V, ceramic disc	72A440
C157	.01uF, 50V, ceramic disc	72A440
C158	(not used)	

Reference Designator	Description	Part No.
C159	.047uF, 50V, ceramic disc	72A419
C160	.047uF, 50VDC, mylar	72A443
C161	.01uF, 50VDC, mylar	42A440
C162	120pF, 50VDC, mylar	72A413
C163	.01uF, 50VDC, mylar	72A440
C164	2pF, 50VDC, mylar	72A444
C165	.01uF, 50VDC, mylar	72A440
C116	10pF, 50VDC, mylar	72A399
C167	(not used)	
C168	2pF, 50V, ceramic disc	72A444
C169	.047uF, 50V, mylar	72A443
C170	.047uF, 50V, mylar	72A443
C171	.047uF, 50V, mylar	72A443
C172	.047uF, 50V, mylar	72A443
C173	.047uF, 50V, mylar	72A443
C174	33uF, 25V, electrolytic	72A431
C175	4700pF, 25V, electrolytic	72A425
C176	1uF, 50V, electrolytic	72A430
C177	.033uF, 50V, electrolytic	72A428
C178	56pF, 50V, electrolytic	72A408
C179	(not used)	
C180	560pF, 50V, electrolytic	72A421
C181	100pF, 50V, electrolytic	72A411
C182	68pF, 50V, electrolytic	72A445
C183	10uF, 16V, electrolytic	72A434
C184	.022uF, 50V, ceramic disc	722427
C185	47uF, 10V, electrolytic	72A436
C186 through		
C188	(not used)	
C189	.01uF, 50V, ceramic disc	722426
C190	.01uF, 50V, ceramic disc	72A440
C191	.022uF, 50V, ceramic disc	72A427
C192	150pF, 50V, ceramic disc	72A414
C193	.01uF, 50V, ceramic disc	72A426
C194	.01uF, 50V, ceramic disc	72A440
C195	2200pF, 50V, ceramic disc	72A459
C196	3.9uF, 25V, electrolytic	72A455
C197	33uF, 6.3V, electrolytic	72A435
C198	68pF, 6.3V, electrolytic	72A409
C199	68pF, 6.3V, electrolytic	72A409
C200	100pF, 6.3V, electrolytic	72A411
C201	.068uF, 6.3V, electrolytic	72A429
C202	100pF, 6.3V, electrolytic	72A411
C203	47uF, 16V, electrolytic	72A437
C204	220uF, 16V, electrolytic	72A449
C205	.068uF, 16V, electrolytic	72A429
C206	(not used)	
C207	33uF, 6.3V, electrolytic	72A435
C208	10uF, 16V, electrolytic	72A434
C209	1uF, 50V, electrolytic	72A430
C210	1000uF, 16V, electrolytic	72A450
C211	47uF, 25V, electrolytic	72A438
C212	33uF, 6.3V, electrolytic	72A435
C213	.01uF, 6.3V, electrolytic	72A440
C214	.01uF, 6.3V, electrolytic	72A440
C215	.01uF, 6.3V, electrolytic	72A440
C216	.01uF, 6.3V, electrolytic	72A440
C217	.047uF, 6.3V, electrolytic	72A419
C218	.047uF, 6.3V, electrolytic	72A419
C219	.047uF, 6.3V, electrolytic	72A419
C220	.047uF, 6.3V, electrolytic	72A419
C221	(not used)	
C222	47uF, 25V, electrolytic	72A432
C223	39pF, 25V, electrolytic	72A407

Reference Designator	Description	Part No.
C224	.01uF, 25V, electrolytic	72A440
C225 through C229	(not used)	
C230	7pF, 50V, ceramic disc	722854
C231	100pF, 50V, ceramic disc	722411
C232	3300pF, 50V, mylar cap	722852
C233	330pF, 50V, ceramic disc	722416
C234	(not used)	
C235	18pF, 50V, ceramic disc	722402
C236	33pF, 50V, ceramic disc	722406
C237	.0022uF, 50V, ceramic disc	722459
C238	.0022uF, 50V, ceramic disc	722459
C239	(not used)	
C240	33uF, 16V, electrolytic	722850
C241	(not used)	
C242	1uF, 50V, ceramic disc	72A430
C243	100pF, 50V, ceramic disc	72A411
C244	.047uF, 50V, ceramic disc	72A419
C245 through C246	(not used)	
C247	39pF, 50V, ceramic disc	72A407
C248 through C599	(not used)	
C600 through C602	(not used)	
C603	220pF, 500V, mylar	721665
C604 through C613	(not used)	
C614	39pF, 50V, ceramic disc	72A407
CF101	ceramic filter	78A067
CH101	choke coil	72A482
CT101	3.3, 18pF, ceramic trimmer	72A439
D101	SMV1334 varactor	76A135
D102	1N751A zener	76A134
D103	1N757A zener	76A133
D104	1N4002 rectifier	76A132
D105	1N4002 rectifier	76A132
D106	1N4148 diode	760037
D107	1N4148 diode	760037
D108	1N4148 diode	760037
D109	1N60 diode	760057
D110	1N60 diode	760057
D111	1N60 diode	760057
D112	(not used)	
D113	(not used)	
D114	1N4148 diode	760037
D115	1N60 diode	760057
D116	1N60 diode	760057
D117	(not used)	
D118	1N4148 diode	760037
IC101	PLL 02A PLL IC	76A136
IC102	TA7205P audio IC	76A137
L101	RF choke	72A490
L102	(not used)	
L103	coil 27 MHz	72A481
L104	coil	72A480
L105	RF choke	72A489
L106	RF coil	72A486

Reference Designator	Description	Part No.
L107	RF choke	72A491
L108	RF coil	72A487
L109	RF coil	72A484
L110	RF coil	72A485
L111	RF choke	72A491
L112	transformer	73A041
L113	RF choke	72A488
L114	RF choke	72A488
L115	(not used)	
L116	RF coil	72A483
Q101	MPS3704 transistor	76A142
Q102	MPS6514 transistor	76A140
Q103	MPS6513 transistor	760139
Q104	MPS6513 transistor	760139
Q105	MPS6513 transistor	760139
Q106	MPS3704 transistor	76A142
Q107	MPS3702 transistor	76A141
Q108	MPS6513 transistor	760139
Q109	MPS6513 transistor	760139
Q110	MPS6513 transistor	760139
Q111	MPS6513 transistor	760139
Q112	MPS-U02 RF Driver	76A143
Q113	MRF-472 RF power amplifier	76A144
Q114	MPS6514 transistor	76A140
Q115	MPS6514 transistor	76A140
Q116	MPS6513 transistor	760139
Q117	MPS6513 transistor	760139
Q118	MPS6514 transistor	76A140
Q119	MPS6514 transistor	76A140
Q120	MPS5172 transistor	76A138
Q121	MPS6514 transistor	76A140
Q122	MPS6513 transistor	760139
Q123	MPS6513 transistor	760139
Q124	MPS6513 transistor	760139
Q125	2N5088 transistor	760149
Q126	2N5088 transistor	760149
R101	330, 1/4w, 10%, carbon film	72A552
R102	100k, 1/4w, 10% carbon film	72A612
R103	3.3k, 1/4w, 5%, carbon film	72A576
R104	1.5k, 1/4w, 5%, carbon film	72A568
R105	220k, 1/4w, 5%, carbon film	72A620
R106	1.5k, 1/4w, 5%, carbon film	72A568
R107	100k, 1/4w, 5%, carbon film	72A612
R108	1.5k, 1/4w, 5%, carbon film	72A568
R109	100k, 1/4w, 5%, carbon film	72A612
R110	2.2k, 1/4w, 5%, carbon film	72A572
R111	1k, 1/4w, 5%, carbon film	72A564
R112	100k, 1/4w, 5%, carbon film	72A612
R113	3.3k, 1/4w, 5%, carbon film	72A576
R114	470, 1/4w, 5%, carbon film	72A556
R115	22k, 1/4w, 5%, carbon film	72A596
R116	470, 1/4w, 5%, carbon film	72A556
R117	33k, 1/4w, 5%, carbon film	72A600
R118	100, 1/2w, carbon film	72A717
R119	3.3k, 1/4w, 5%, carbon film	72A576
R120	100k, 1/4w, 5%, carbon film	72A612
R121	2.2k, 1/4w, 5%, carbon film	72A572
R122	1k, 1/4w, 5%, carbon film	72A564
R123	2.2k, 1/4w, 5%, carbon film	72A572
R124	270, 1/4w, 5%, carbon film	72A550
R125	10k, 1/4w, 5%, carbon film	72A588

Reference Designator	Description	Part No.
R126	(not used)	
R127	68, ¼w, 5%, carbon film	72A536
R128	100, ¼w, 5%, carbon film	72A540
R129	220, ¼w, 5%, carbon film	72A458
R130	47, ¼w, 5%, carbon film	72A532
R131	10, ½w, 5%, carbon film	72A693
R132	47k, ¼w, 5%, carbon film	72A604
R133	1k, ¼w, 5%, carbon film	72A564
R134	680, ¼w, 5%, carbon film	72A560
R135	1.5k, ¼w, 5%, carbon film	72A568
R136	100, ¼w, 5%, carbon film	72A540
R137	1.8k, ¼w, 5%, carbon film	72A570
R138	1k, ¼w, 5%, carbon film	72A564
R139	470, ¼w, 5%, carbon film	72A556
R140	100k, ¼w, 5%, carbon film	72A612
R141	1k, ¼w, 5%, carbon film	72A564
R142	4.7k, ¼w, 5%, carbon film	72A580
R143	470, ¼w, 5%, carbon film	72A556
R144	47k, ¼w, 5%, carbon film	72A604
R145	220, ¼w, 5%, carbon film	72A548
R146	330, ¼w, 5%, carbon film	72A552
R147	1.5k, ¼w, 5%, carbon film	72A568
R148	27k, ¼w, 5%, carbon film	72A598
R149	220, ¼w, 5%, carbon film	72A548
R150	47, ¼w, 5%, carbon film	72A532
R151	22k, ¼w, 5%, carbon film	72A596
R152	270k, ¼w, 5%, carbon film	72A622
R153	47k, ¼w, 5%, carbon film	72A506
R154	68k, ¼w, 5%, carbon film	72A608
R155	33k, ¼w, 5%, carbon film	72A600
R156	47k, ¼w, 5%, carbon film	72A506
R157	(not used)	
R158	100k, ¼w, 5%, carbon film	72A612
R159	1.5k, ¼w, 5%, carbon film	72A568
R160	1.5k, ¼w, 5%, carbon film	72A568
R161	22k, ½w, 5%, carbon film	72A701
R162	1k, ¼w, 5%, carbon film	72A564
R163	390, ¼w, 5%, carbon film	72A554
R164	10k, ¼w, 5%, carbon film	72A588
R165	820, ¼w, 5%, carbon film	722562
R166	(not used)	
R167	27k, ¼w, 5%, carbon film	72A598
R168	3.3k, ¼w, 5%, carbon film	72A576
R169	220k, ¼w, 5%, carbon film	72A620
R170	22k, ¼w, 5%, carbon film	72A596
R171	150, ¼w, 5%, carbon film	72A544
R172	2.2k, ¼w, 5%, carbon film	72A572
R173	820, ¼w, 5%, carbon film	72A562
R174	68, ¼w, 5%, carbon film	72A536
R175	10k, ¼w, 5%, carbon film	72A588
R176	82, ¼w, 5%, carbon film	72A538
R177	270, ¼w, 5%, carbon film	72A550
R178	680, ¼w, 5%, carbon film	72A560
R179	22k, ¼w, 5%, carbon film	72A596
R180	1.8k, ¼w, 5%, carbon film	72A570
R181	18k, ¼w, 5%, carbon film	72A594
R182 through		
R185	(not used)	
R186	10k, ¼w, 5%, carbon film	722588
R187	820k, ¼w, 5%, carbon film	722634
R188	820k, ¼w, 5%, carbon film	722634
R189	220k, ¼w, 5%, carbon film	722620
R190	4.7k, ¼w, 5%, carbon film	722580
R191	22k, ¼w, 5%, carbon film	722596

Reference Designator	Description	Part No.
R192	56k, ¼w, 5%, carbon film	72A582
R193	10k, ¼w, 5%, carbon film	722588
R194	8.2, ¼w, 5%, carbon film	72A357
R195	1.5k, ¼w, 5%, carbon film	722568
R196 through R200	(not used)	
R201	10k, ¼w, 5%, carbon film	72A588
R202	5.6k, ohm, ¼w, 5%, carbon film	72A582
R203	560, ¼w, 5%, carbon film	72A558
R204	18k, ¼w, 5%, carbon film	72A594
RV101	10k, ¼w, 5%, carbon film	72A398
RV102	2k, ¼w, 5%, carbon film	72A397
RV103	20k, 30%, 0.1w trimmer	722856
T101	37 MHz transformer	73A047
T102	27 MHz transformer	73A042
T103	27 kHz transformer	73A043
T104	27 MHz transformer	73A044
T105	27 MHz transformer	73A045
T106	10.7 MHz transformer	73A041
T107	455 kHz transformer	73A038
T108	455 kHz transformer	73A039
T109	455 kHz transformer	73A040
T110	audio transformer	73A048
T111	27 MHz transformer	73A046
X101	11.8066 MHz crystal	78A068
X102	11.695 MHz crystal	78A069
X103	10.28 MHz crystal	78A070

Power Regulator P.C. Board (A-1)

Reference Designator	Description	Part No.
	power regulator board assy, complete	879542
	power regulator board, drilled and plated	750147
A1C1	2200uF, 35V electrolytic	722912
A1C2	.01uF, 50V, ceramic disc	720146
A1D1	MR501 diode	760327
A1D2	MR501 diode	760327
A1D3	MR501 diode	760327
A1D4	MR501 diode	760327
A1D5	1N4744 diode	760334
A1F1	2.5A fuse AGC	710230
A1Q1	T1P120, transistor	760328
A1R1	1k, ½w, 5%, ceramic disc	722741
A1R2	220, ½w, 5%, ceramic disc	722725

SWR Dectector P.C. Board (A-2)

Reference Designator	Description	Part No.
	swr p.c. board, drilled and plated	750145
	swr p.c. board assembly, complete	879541
A2C1	.01uF, 50V, ceramic disc	722426
A2C2	1pF, 50V, ceramic disc	72A447
A2C3	.01uF, 50V, ceramic disc	722426
A2C4	.0047uF, 50V, ceramic disc	722425
A2C5	3.3uF, 25V, ceramic disc	722431
A2C6	.0047uF, 50V, ceramic disc	722425
A2C7	.0047uF, 50V, ceramic disc	722425
A2D1	1N60 diode	760051
A2D2	1N60 diode	760051
A2D3	1N60 diode	760051
A2D4	1N60 diode	760051
A2D5	1N60 diode	760051
A2D6	1N60 diode	760051
A2R1	56, 1/4w, 5%, carbon film	722534
A2R2	56, 1/4w, 5%, carbon film	722534
A2R3	(not used)	
A2R4	1k, 1/4w, 5%, carbon film	722564
A2R5	10k, 1/4w, 5%, carbon film	722588
A2RV1	20k, potentiometer	722916
A2RV2	5k, potentiometer	722914
A2RV3	10k, potentiometer	722915

Clock Control P.C. Board (A-3)

Reference Designator	Description	Part No.
	clock control p.c. board assy, complete	789450
	clock control p.c. board, drilled and plated	750149
A3C1	330pF, 500V, ceramic disc	721681
A3C2	330pF, 500V, ceramic disc	721681
A3L1	28uh, choke	722910
A3S1	spst momentary switch	700068
A3S2	spst momentary switch	700068
A3S3	spst momentary switch	700068

Edge Control P.C. Board (A-4)

Reference Designator	Description	Part No.
	edge control p.c. board assy, complete	879538
	edge control p.c. board, drilled and plated	750144
A4S1	DPDT, momentary switch (NB) (off)	700070
A4S2	DPDT, momentary switch (PA/CB)	700070
A4S3	DPDT, momentary switch (mod/cal)	700070
A4S5	DPDT, momentary switch (swr/cal)	700070

Channel Selector P.C. Board (A-5)

Reference Designator	Description	Part No.
	channel selector p.c. board assy, complete	879539
	channel selector p.c. board, plated and drilled	750148
A5DS1	NSN583, dual light, led display	760329
A5Q1	mps 6513 transistor	760139
A5Q2	mps 6513 transistor	760139
A5R1 through		
A5R14	1k, 1/2w, 5%, carbon film	722741
A5R15	220, 1/2w, 5%, carbon film	722725
A5R16	15k, 1/2w, 5%, carbon film	722592
A5R17	220, 1/2w, 5%, carbon film	722725
A5R18	15k, 1/2w, 5%, carbon film	722592
A5R19	100, 1w, 10%, carbon film	721379
A5R20	100, 1w, 10%, carbon film	721379
A5S1	switch, 40 channel w/led coding	700065

Chassis Mounted Components

Reference Designator	Description	Part No.
A6C1	(not used)	
A6C2	.047uF, 50V, ceramic disc	72A419
A6C3	.01uF, 50V, ceramic disc	72A440
A6C4	.01uF, 50V, ceramic disc	72A440
A6C5	(not used)	
C1	.001 uF, 50V, ceramic disc	722849
C2	.001 uF, 50V, ceramic disc	722849
C3	.001 uF, 50V, ceramic disc	722849
C4	0.1uF, mylar film	722365
C5	100uF, 10V, mylar film	722365
C6	100uF, 10V, mylar film	722365
C7	.001 uF, 50V, ceramic disc	722849
C8	.001 uF, 50V, ceramic disc	722849
C9	.001 uF, 50V, ceramic disc	722849

Reference Designator	Description	Part No.
C10	.001 uF, 50V, ceramic disc	722849
C11	.001 uF, 50V, ceramic disc	722849
C12	.001 uF, 50V, ceramic disc	722849
D1	1N4148 switching diode	760037
D2	1N4148 switching diode	760037
F2	fuse 1 amp 3AG	710234
J1	antenna jack	650065
J2	microphone jack	650113
J3	ext speaker jack	650076
J4	phone jack	650114
J5	pa jack	650076
meter	S/mod, 400ua, 500 ohms	790010
meter	RF/SWR, 400ua, 500 ohms	790009
PL1	lamp 6V	710039
PL2	lamp 6V	710039
PL3	lamp 6V	710039
PL4	lamp 6V	710039
PL5	lamp 6V	710039
PL6	lamp 6V	710039
PL7	lamp 6V	710039
RC1	cr module	722930
RV1	5k, 20% (swr cal) .1w	722918
RV2	50k, 20% (mod cal) .1w	722921
RV3	100k 20% (rf gain) .1w	722922
RV4	10k 20% (squelch) .1w	722919
RV5	5k (D) (mic gain) 20%, .1w	722910
RV6	50k (A) (tone) 20%, 1w	722920
RV7	50k (A) (volume) 20%, .1w	722921
SW1	switch, dpst on/off, 3A, 250VAC	700069
T1	pwr transformer	730058
T2	clock transformer	730060

Mechanical Parts

Part No.	Description	Qty.
879713	assembly top cabinet	1
879714	assembly bottom cabinet	1
380371	chassis main frame	1
380359	cover, top	1
380360	panel, display	1
370941	panel, display mod	1
380361	bracket, TX, RX, lamp mounting	1
380363	bracket, power switch mounting	1
430358	window, clock indicating	1
150207	heat sink (power)	1
460199	indicator TX (red)	1

Part No.	Description	Qty.
460198	indicator RX (orange)	1
710040	holder, lamp (power)	1
450162	power, cord strain relief	1
730057	speaker	1
810052	foot, rubber	4
150497	knob channel select	1
150498	knob variable selector	1
150496	knob power switch	1
710027	holder, fuse 1A	1

Accessory Parts

Part No.	Description	Qty.
879544	microphone	1
690355	cord, AC power	1




Schematic Diagram

HY-GAIN DE PUERTO RICO, INC.

P.O. Box 68 State Hwy 31, Km. 4.0
Naguabo, Puerto Rico 00718