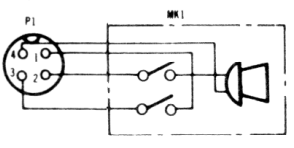


SCHEMATIC
COBRA 135
488-116-9-001



NOTE
 All resistors are in ohms and 1/8W unless otherwise noted.
 All mylarfilm capacitors indicated as 0.033 etc are in μ F.
 All ceramic capacitors indicated as 22 etc are in PF.
 All ceramic capacitors of this mark (—|—) are 4700PF unless otherwise noted.
 All ceramic capacitors of this mark (*|—) are 2200PF unless otherwise noted.
 All diodes of this mark (—▶—) are 1S1555 unless otherwise noted.