

Figure 13 – Main Printed Circuit Board

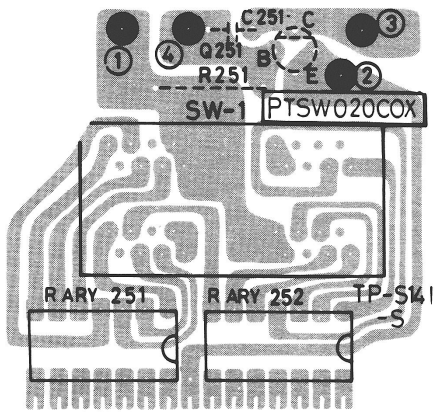


Figure 14 – Channel Selector Printed Circuit Board

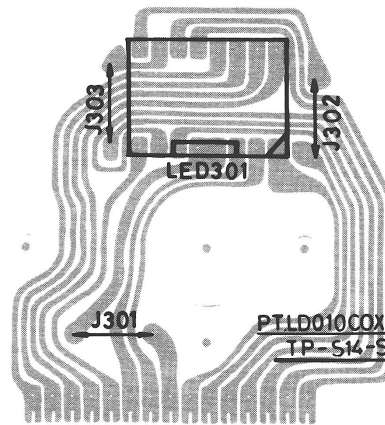


Figure 15 – LED Printed Circuit Board

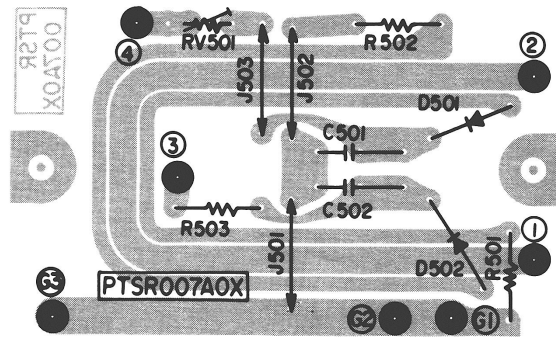
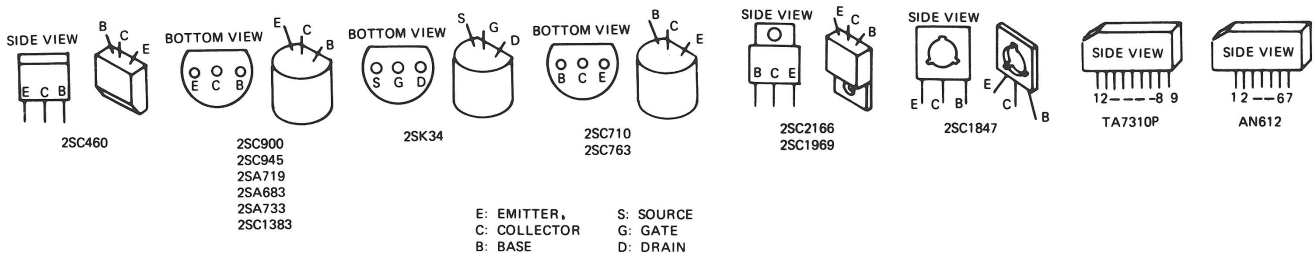


Figure 16 – SWR Printed Circuit Board

TRANSISTOR BASE INFORMATION



Replacement Parts

NOTE: Location column pertains to grid coordinates shown in printed board diagram Figure 13 on Page 17.

SYMB. NO.	STOCK NO.	DESCRIPTION	LOCATION	SYMB. NO.	STOCK NO.	DESCRIPTION	LOCATION
CAPACITORS				C60	742580	5 pf, 50 v, Cer	B8
C1	142075	.0047 uF, 50 v, Film Mylar	I1	C61	423295	2 pf, 5%, 50 v, Cer Disc	B8
C2	437396	.022 uF, 10%, 50 v, Mylar Film	H1	C62	741755	.01 uF, 10%, 50 v, Film Mylar	A8
C3	742598	.1 uF, 35 v, Tantalum	H1	C63	742076	1 uF, 20%, 50 v, Cer. Plate	A8
C4	742599	.22 uF, 35 v, Tant	H2	C64	741755	.01 uF, 10%, 50 v, Film Mylar	H2
C5	742596	10 uF, 16 v, Tant	H2	C65	245245	47 pf, 5%, 75 v, Cer. Plate	G1
C6	741781	33 pf, 10%, 50 v, Ceramic	I5	C66	422014	10 pf, 5%, 75 v, Cer. Plate	G1
C7	741766	12 pf, 10%, 50 v, Ceramic	I5	C67	741754	.001 uF, 10%, 50 v, Film Mylar	F1
C8	742076	1 uF, 20%, 50 v, Cer. Plate	H5	C68	741807	22 pf, 10%, 50 v, Ceramic	F1
C9	741754	.001 uF, 10%, 50 v, Film Mylar	I6	C69	437367	220 pf, 5%, 50 v, Ceramic	H2
C10	742592	1200 pf, 50 v, Film (Mylar)	H6	C70	437367	220 pf, 5%, 50 v, Ceramic	H2
C11	423295	2 pf, 5%, 50 v, Cer Disc	H6	C71	742581	8 pf, 50 v, Cer	G2
C12	741781	33 pf, 10%, 50 v, Ceramic	G7	C72	741763	100 pf, 10%, 50 v, Ceramic	H3
C13	741781	33 pf, 10%, 50 v, Ceramic	H7	C73	741781	33 pf, 10%, 50 v, Ceramic	G2
C14	422014	10 pf, 5%, 75 v, Cer. Plate	I8	C74	741807	22 pf, 10%, 50 v, Ceramic	G2
C15	741755	.01 uF, 10%, 50 v, Film Mylar	I7	C75	741755	.01 uF, 10%, 50 v, Film Mylar	G3
C16	741755	.01 uF, 10%, 50 v, Film Mylar	J6	C76	742587	4.7 uF, 25 v, Elyt	F3
C17	741781	33 pf, 10%, 50 v, Ceramic	J6	C77	741755	.01 uF, 10%, 50 v, Film Mylar	G3
C18	741754	.001 uF, 10%, 50 v, Film Mylar	J7	C78	742068	10 uF, 16 v, Elyt	F3
C19	437367	220 pf, 5%, 50 v, Ceramic	J6	C79	741755	.01 uF, 10%, 50 v, Film Mylar	G3
C20	437371	22 pf, 5%, 50 v, Ceramic	I6	C80	742068	10 uF, 16 v, Elyt	F3
C21	742582	15 pf, 50 v, Cer	I7	C81	741755	.01 uF, 10%, 50 v, Film Mylar	H4
C22	741755	.01 uF, 10%, 50 v, Film Mylar	I7	C82	741755	.01 uF, 10%, 50 v, Film Mylar	G4
C23	741754	.001 uF, 10%, 50 v, Film Mylar	I3	C83	741755	.01 uF, 10%, 50 v, Film Mylar	G4
C24	741788	68 pf, 50 v, Cer	I3	C84	741755	.01 uF, 10%, 50 v, Film Mylar	F2
C25	168471	47 uF, 6.3 v, Elect	I1	C85	741755	.01 uF, 10%, 50 v, Film Mylar	G2
C26	741780	.047 uF, 10%, 50 v, Film Mylar	I2	C86	741755	.01 uF, 10%, 50 v, Film Mylar	G6
C27	741755	.01 uF, 10%, 50 v, Film Mylar	I4	C87	742599	.22 uF, 35 v, Tant	G5
C28	741754	.001 uF, 10%, 50 v, Film Mylar	J3	C88	741755	.01 uF, 10%, 50 v, Film Mylar	G5
C29	742580	5 pf, 50 v, Cer	J4	C89	741755	.01 uF, 10%, 50 v, Film Mylar	F6
C30	741788	68 pf, 50 v, Cer	J3	C90	741755	.01 uF, 10%, 50 v, Film Mylar	G6
C31	437390	27 pf, 5%, 50 v, Ceramic	J4	C91	741755	.01 uF, 10%, 50 v, Film Mylar	E5
C32	421640	560 pf, 50 v, Cer	J4	C92	741755	.01 uF, 10%, 50 v, Film Mylar	E5
C33	742076	1 uF, 20%, 50 v, Cer. Plate	J7	C93	741755	.01 uF, 10%, 50 v, Film Mylar	E5
C34	741755	.01 uF, 10%, 50 v, Film Mylar	J7	C94	741755	.01 uF, 10%, 50 v, Film Mylar	D6
C35	741755	.01 uF, 10%, 50 v, Film Mylar	G6	C95	742579	3 pf, 50 v, Cer	D6
C36	427831	15 pf, 50 v, 10%, Cer. Plate	G6	C96	741781	33 pf, 10%, 50 v, Ceramic	D6
C37	741768	82 pf, 10%, 50 v, Ceramic	G7	C97	741794	33 uF, 6.3 v, Elyt	D5
C38	426475	120 pf, 10%, 50 v, Cer.	G7	C98	741754	.001 uF, 10%, 50 v, Film Mylar	D5
C39	741755	.01 uF, 10%, 50 v, Film Mylar	H7	C99	741755	.01 uF, 10%, 50 v, Film Mylar	D5
C40	741755	.01 uF, 10%, 50 v, Film Mylar	H7	C100	741781	33 pf, 10%, 50 v, Ceramic	C8
C42	742579	3 pf, 50 v, Cer	G8	C101	741755	.01 uF, 10%, 50 v, Film Mylar	B8
C43	245245	47 pf, 5%, 75 v, Cer. Plate	G8	C102	741755	.01 uF, 10%, 50 v, Film Mylar	C8
C45	741755	.01 uF, 10%, 50 v, Film Mylar	G8	C103	741755	.01 uF, 10%, 50 v, Film Mylar	C8
C46	741755	.01 uF, 10%, 50 v, Film Mylar	G9	C104	742579	3 pf, 50 v, Cer	D8
C47	245245	47 pf, 5%, 75 v, Cer. Plate	G9	C105	741755	.01 uF, 10%, 50 v, Film Mylar	D8
C48	741755	.01 uF, 10%, 50 v, Film Mylar	F9	C106	741755	.01 uF, 10%, 50 v, Film Mylar	D8
C49	423555	330 pf, 50 v, Cer	F9	C107	741761	39 pf, 10%, 50 v, Ceramic	E8
C50	741755	.01 uF, 10%, 50 v, Film Mylar	F9	C108	742076	1 uF, 20%, 50 v, Cer. Plate	E7
C51	741780	.047 uF, 10%, 50 v, Film Mylar	C8	C109	741755	.01 uF, 10%, 50 v, Film Mylar	E8
C52	741768	82 pf, 10%, 50 v, Ceramic	E9	C110	741755	.01 uF, 10%, 50 v, Film Mylar	F8
C53	248646	180 pf, 5%, 75 v, Cer. Plate	D9	C111	741755	.01 uF, 10%, 50 v, Film Mylar	F8
C54	427831	150 pf, 50 v, 10%, Cer. Plate	B9	C112	742580	5 pf, 50 v, Cer	C7
C55	421640	560 pf, 50 v, Cer	B9	C113	437367	220 pf, 5%, 50 v, Ceramic	C7
C56	245245	47 pf, 5%, 75 v, Cer. Plate	A9	C114	742075	.0047 uF, 50 v, Film Mylar	C7
C57	426384	470 pf, 50 v, Cer	A9	C115	741754	.001 uF, 10%, 50 v, Film Mylar	C7
C58	742599	.22 uF, 35 v, Tant	A7	C116	742593	.033 uF, 50 v, Film Mylar	D7
C59	741755	.01 uF, 10%, 50 v, Film Mylar	A7	C117	742075	.0047 uF, 50 v, Film Mylar	D7
				C118	741755	.01 uF, 10%, 50 v, Film Mylar	E6

(Continued on Page 22)

SYMB. NO.	STOCK NO.	DESCRIPTION	LOCATION	SYMB. NO.	STOCK NO.	DESCRIPTION	LOCATION
C119	742068	10 uF, 16 v, Elyt	D7	C186	437367	220 pf, 5%, 50 v, Ceramic	F5
C121	741754	.001 uF, 10%, 50 v, Film Mylar	E7	C187	742525	18 pf, 50 v, Cer	G4
C122	437390	27 pf, 5%, 50 v, Ceramic	F4	C186	742525	18 pf, 50 v, Cer	G6
C123	742593	.033 uF, 50 v, Film (Mylar)	D4	C189	741779	.047 uF, 50 v, Cer	B1
C124	741755	.01 uF, 10%, 50 v, Film Mylar	C1	C190	741755	.01 uF, 10%, 50 v, Film Mylar	H8
C125	742593	.033 uF, 50 v, Film (Mylar)	C5	C191	741755	.01 uF, 10%, 50 v, Film Mylar	G2
C126	741755	.01 uF, 10%, 50 v, Film Mylar	C7	C192	741780	.047 uF, 10%, 50 v, Film Mylar	
C127	742068	10 uF, 16 v, Elyt	E7	C193	742068	10 uF, 16 v, Elyt	
C128	742075	.0047 uF, 50 v, Film Mylar	B5	C194	245245	47 pf, 5%, 75 v, Cer. Plate	
C129	742074	3.3 uF, 25 v, Elyt	A5	C201	741761	39 pf, 50 v, Cer	RP
C130	742593	.033, uF, 50 v, Mylar	A5	C202	742087	.01 uF, 50 v, Cer	RP
C131	742068	10 uF, 16 v, Elyt	A6	C203	742087	.01 uF, 50 v, Cer	RP
C132	742075	.0047 uF, 50 v, Film Mylar	A6	C204	742589	.001 uF, 50 v, Cer	RP
C133	741775	220 pf, 50 v, Cer	A6	C205	742569	.047 uF, 50 v, Cer	RP
C134	742594	8200 pf, 50 v, Film (Mylar)	A6	C206	742569	.047 uF, 50 v, Cer	RP
C135	742076	1 uF, 20%, 50 v, Cer. Plate	B5	C207	742087	.01 uF, 50 v, Cer	FP
C136	741755	.01 uF, 10%, 50 v, Film Mylar	B5	C208	742589	.001 uF, 50 v, Cer	FP
C137	741755	.01 uF, 10%, 50 v, Film Mylar	C7	C209	742087	.01 uF, 50 v, Cer	FP
C138	741763	100 pf, 10%, 50 v, Ceramic	C6	C210	742569	.047 uF, 50 v, Cer	†
C139	741807	22 pf, 10%, 50 v, Ceramic	C6	C212	742569	.047 uF, 50 v, Cer	†
C140	742580	5 pf, 50 v, Cer	C6	C251	742070	.01 uF, 50 v, Cer	LC1
C141	742597	1 uF, 25 v, Tant	C6	C501	426027	.01 uF, 50 v, Cer	SWR
C142	742074	3.3 uF, 25 v, Elyt.	C6	C502	426027	.01 uF, 50 v, Cer	SWR
C143	742597	1 uF, 25 v, Tant	C6				
C144	741755	.01 uF, 10%, 50 v, Film Mylar	C6	CF1	142600	Filter - Ceramic	D4
C145	437391	10 uF, 16 v, Elect (Radial)	B6				
C146	741755	.01 uF, 10%, 50 v, Film Mylar	B7	CH1	742611	Coil-Choke	A2
C148	742068	10 uF, 16 v, Elyt	E3				
C149	741755	.01 uF, 10%, 50 v, Film Mylar	E3	CT1	741721	Capacitor- Trimmer	I6
C150	742068	10 uF, 16 v, Elyt	D3	CT2	741721	Capacitor- Trimmer	I7
C151	741786	2200 pf, 50 v, Film Mylar	E2	CT3	741721	Capacitor- Trimmer	J4
C152	437396	.022 uF, 10%, 50 v, Mylar Film	D2	CT4	741721	Capacitor- Trimmer	G2
C153	741775	220 pf, 50 v, Cer	E1	CT5	741721	Capacitor- Trimmer	G1
C154	741755	.01 uF, 10%, 50 v, Film Mylar	D1				
C155	741786	2200 pf, 50 v, Film Mylar	C1	D1	742617	Diode - Type MA150	H1
C156	742595	3.9 uF, 10 v, Tant	D1	D2	741738	Diode - Type ZM2205	I1
C157	741772	68 pf, 50 v, Cer	C2	D3	742616	Diode - Type ITT310	J7
C158	427831	15 pf, 50 v, 10%, Cer. Plate	C2	D4	742617	Diode - Type MA150	J8
C159	741772	68 pf, 50 v, Cer	C2	D5	742617	Diode - Type MA150	J8
C160	741794	33 uF, 6.3 v, Elyt	C2	D6	742617	Diode - Type MA150	H6
C161	741795	.068 uF, 50 v, Film Mylar	C3	D7	741738	Diode - Type ZM2205	B7
C162	742079	47 uF, 16 v, Elyt	B2	D8	742617	Diode - Type MA150	A7
C163	741763	100 pf, 50 v, Cer	C1	D9	112524	Diode - Type 1N60	A8
C164	742076	1 uF, 20%, 50 v, Cer. Plate	B1	D10	742617	Diode - Type MA150	E1
C165	741779	.047 uF, 50 v, Cer	B3	D11	742617	Diode - Type MA150	G4
C166	742585	2200 uF, 16 v, Elyt	B4	D12	742617	Diode - Type MA150	F4
C167	129625	330 uF, 16 v, Elyt	B3	D14	742617	Diode - Type MA150	F5
C168	437377	100 uF, 16 v, Elect (Radial)	B4	D15	742617	Diode - Type MA150	F5
C169	741755	.01 uF, 10%, 50 v, Film Mylar	E1	D16	742617	Diode - Type MA150	B6
C170	742068	10 uF, 16 v, Elyt	E2	D17	742617	Diode - Type MA150	D5
C171	168471	47 uF, 6.3 v, Elect	D3	D18	742617	Diode - Type MA150	B9
C172	741755	.01 uF, 10%, 50 v, Film Mylar	D2	D19	742617	Diode - Type MA150	B9
C173	741781	33 pf, 10%, 50 v, Ceramic	C3	D20	112524	Diode - Type 1N60	C7
C174	741755	.01 uF, 10%, 50 v, Film Mylar	D2	D21	112524	Diode - Type 1N60	C7
C175	742586	2.2 uF, 25 v, Elyt	B3	D22	112524	Diode - Type 1N60	E4
C176	742079	47 uF, 16 v, Elyt	A5	D23	112524	Diode - Type 1N60	E4
C178	742085	33 uF, 16 v, Elyt	I9	D24	742716	Diode - Type 1S32	D5
C179	742079	47 uF, 16 v, Elyt	G7	D25	112524	Diode - Type 1N60	B5
C180	741779	.047 uF, 50 v, Cer	A2	D26	742617	Diode - Type MA150	A5
C181	741779	.047 uF, 50 v, Cer	G9	D27	112524	Diode - Type 1N60	B5
C182	742588	.47 uF, 50 v, Elyt	E7	D28	112524	Diode - Type 1N60	C6
C183	741754	.001 uF, 10%, 50 v, Film Mylar	D7	D29	112524	Diode - Type 1N60	C6
C184	742583	270 pf, 50 v, Cer	A8	D30	742617	Diode - Type MA150	C6
C185	741761	39 pf, 10%, 50 v, Ceramic	G9				

(Continued on Page 23)

SYMB. NO.	STOCK NO.	DESCRIPTION	LOCATION	SYMB. NO.	STOCK NO.	DESCRIPTION	LOCATION
D31	112524	Diode - Type 1N60	C6	M	742674	Meter-500 UA-S/RF/SWR	FP
D32	742617	Diode - Type MA150	C6	MXF	742601	Filter-Metal-10.6935 MHZ	H5
D33	112524	Diode - Type 1N60	C6				
D34	742716	Diode - Type 1S32	B6	PL1	742678	Lamp -- Part of item 12--Meter Lamp	FP
D35	742617	Diode - Type MA150	E3				
D36	742617	Diode - Type MA150	F2	PL2			FP
D37	742617	Diode - Type MA150	D2	Q1	742691	Transistor - Type 2SC900 (F)	H1
D38	742617	Diode - Type MA150	D2	Q2	742705	Transistor - Type 2SC710 (C)	H8
D39	742617	Diode - Type MA150	D2	Q3	741726	Transistor - Type 2SC710D	J6
D40	742617	Diode - Type MA150	C4	Q4	741726	Transistor - Type 2SC710D	I7
D41	742617	Diode - Type MA150	C4	Q5	741726	Transistor - Type 2SC710D	J4
D42	742617	Diode - Type MA150	C4	Q6	741726	Transistor - Type 2SC710D	J4
D43	742717	Diode - Type GP25G	A3	Q7	741726	Transistor - Type 2SC710D	G9
D44	742617	Diode - Type MA150	F2	Q8	742706	Transistor - Type 2SC460 (A)	G9
D45	742617	Diode - Type MA150	F5	Q9	742707	Transistor - Type 2SC2166	E9
D46	742617	Diode - Type MA150	E5	Q10	742708	Transistor - Type 2SC1969	C9
D47	742617	Diode - Type MA150	E5	Q11	741726	Transistor - Type 2SC710D	H2
D48	742617	Diode - Type MA150	E4	Q12	741726	Transistor - Type 2SC710D	F1
D49	742617	Diode - Type MA150	E2	Q13	742705	Transistor - Type 2SC710 (C)	G4
D50	742718	Diode - Type MZ310 (Zener)	F6	Q14	742705	Transistor - Type 2SC710 (C)	F6
D51	741740	Diode - Type 1S1885	B2	Q15	742705	Transistor - Type 2SC710 (C)	F6
D52	742617	Diode - Type MA150	F2	Q16	742705	Transistor - Type 2SC710 (C)	E6
D501	112524	Diode - Type 1N60	SWR	Q17	742705	Transistor - Type 2SC710 (C)	E6
D502	112524	Diode - Type 1N60	SWR	Q18	741726	Transistor - Type 2SC710D	E5
IC1	741686	IC - Type PLL02A	I2	Q19	742709	Transistor - Type 2SC945 (A-Q)	D5
IC2	742510	IC - Type TA7310P	I5	Q20	742705	Transistor - Type 2SC710 (C)	C8
IC3	742510	IC - Type TA7310P	G7	Q21	741726	Transistor - Type 2SC710D	D8
IC4	742620	IC - Type AN612	G3	Q22	742705	Transistor - Type 2SC710 (C)	E8
IC5	741687	I.C. - Type TA7205P	C2	Q23	742710	Transistor - Type 2SC763 (D)	B7
J1	742497	Connector-Jack-Ant	RP	Q24	742711	Transistor - Type 2SK34 (D)	D7
J2	741816	Connector Jack (PA)	RP	Q25	742712	Transistor - Type 2SA733 (Q)	D7
J3	741816	Connector-Jack P.A.	RP	Q26	742710	Transistor - Type 2SC763 (D)	E7
J4	741819	Connector - Jack DC	RP	Q27	742705	Transistor - Type 2SC710 (C)	D4
J5	741815	Connector - Jack Microphone	FP	Q28	742705	Transistor - Type 2SC710 (C)	C5
L1	741695	Coil - R. F.	J6	Q29	741726	Transistor - Type 2SC710D	C5
L2	741697	Coil - R. F.	I6	Q30	742711	Transistor - Type 2SK34 (D)	B6
L3	742606	Coil-RF	G7	Q31	742709	Transistor - Type 2SC945 (A-Q)	B6
L4	741695	Coil - R. F.	G8	Q32	742712	Transistor - Type 2SA733 (Q)	E3
L5	741695	Coil - R. F.	F8	Q33	742709	Transistor - Type 2SC945 (A-Q)	E3
L6	742605	Coil - RF	E9	Q34	742709	Transistor - Type 2SC945 (A-Q)	E3
L7	742652	Coil-RF	E9	Q35	741806	Transistor - Type 2SC900U	E1
L8	742608	Coil-RF	E9	Q36	742709	Transistor - Type 2SC945 (A-Q)	D2
L9	741702	Coil - R. F.	D9	Q37	741729	Transistor - Type 2SA719Q	C3
L10	742608	Coil-RF	C9	Q38	741729	Transistor - Type 2SA719Q	C4
L11	742654	Coil-RF	B9	Q39	742709	Transistor - Type 2SC945 (A-Q)	D2
L12	742602	Coil-RF	B9	Q40	742713	Transistor - Type 2SA683 (R)	F5
L13	742653	Coil-RF	B9	Q41	742714	Transistor - Type 2SC1383 (R)	E5
L14	742609	Coil-RF	A8	Q42	742713	Transistor - Type 2SA683 (R)	E2
L15	741695	Coil - R. F.	G1	Q43	742714	Transistor - Type 2SC1383 (R)	E1
L16	742515	Coil - Peaking - 1 uH	H2	Q44	742715	Transistor - Type 2SC1847 (Q)	F7
L17	741697	Coil - R. F.	F4	Q45	742705	Transistor - Type 2SC710 (C)	G2
L18	742610	Coil-RF	G4	Q46	742709	Transistor - Type 2SC945 (A-Q)	C4
L19	741697	Coil - R. F.	E3		742567	Transistor - Type 2SC1383	LCI
L20	742604	Coil-RF	F7				
L21	742604	Coil-RF	B2				
L22	741702	Coil - R. F.	B2				
L23	741702	Coil - R. F.	E8				
L24	741697	Coil - R. F.	G7	R1	107972	3300 Ohm, 5%, 1/4 w, Comp	I2
L201	742603	Coil-RF	D5	R2	426215	680 Ohms, 1/4 w, 5%, Comp	I2
LED	742568	Diode - Type LED SL1221C	FP	R3	227959	82 Ohm, 5%, 1/4 w, Comp	I6
				R4	108864	470 Ohm, 5%, 1/4 w, Comp	I6

(Continued on Page 24)

SYMB. NO.	STOCK NO.	DESCRIPTION	LOCA-TION	SYMB. NO.	STOCK NO.	DESCRIPTION	LOCA-TION
R5	218762	1000000 Ohm, 5%, 1/4 w, Comp	I2	R73	108861	100 Ohm, 5%, 1/4 w, Comp	D5
R6	245896	1500000 Ohm, 5%, 1/4 w, Comp	I8	R74	108869	15000 Ohm, 5%, 1/4 w, Comp	D6
R7	239455	1200 Ohm, 5%, 1/4 w, Comp	I8	R75	223769	100000 Ohm, 5%, 1/4 w, Comp	D5
R8	108861	100 Ohm, 5%, 1/4 w, Comp	I7	R77	108865	1000 Ohm, 5%, 1/4 w, Comp	C5
R9	108861	100 Ohm, 5%, 1/4 w, Comp	J6	R78	107972	3300 Ohm, 5%, 1/4 w, Comp	D5
R10	227741	560 Ohm, 5%, 1/4 w, Comp	J6	R79		Not used	D6
R11	239954	5600 Ohm, 2%, 1/4 w, Film	J6	R80	108865	1000 Ohm, 5%, 1/4 w, Comp	B8
R12	108866	2200 Ohm, 5%, 1/4 w, Comp	J7	R81	426213	4700 Ohm, 5%, 1/4 w, Comp	C8
R13	108865	1000 Ohm, 5%, 1/4 w, Comp	J7	R82	108871	47000 Ohm, 5%, 1/4 w, Comp	B7
R14	107972	3300 Ohm, 5%, 1/4 w, Comp	I7	R83	218758	220 Ohm, 5%, 1/4 w, Comp	C8
R15	108866	2200 Ohm, 5%, 1/4 w, Comp	J6	R84	107972	3300 Ohm, 5%, 1/4 w, Comp	D9
R16	227959	82 Ohm, 5%, 1/4 w, Comp	I6	R85	426213	4700 Ohm, 5%, 1/4 w, Comp	D8
R17	232389	470000 Ohm, 5%, 1/4 w, Comp	I3	R86	108864	470 Ohm, 5%, 1/4 w, Comp	E7
R18	232389	470000 Ohm, 5%, 1/4 w, Comp	I3	R87	218758	220 Ohm, 5%, 1/4 w, Comp	F8
R19	108864	470 Ohm, 5%, 1/4 w, Comp	J3	R88	107972	3300 Ohm, 5%, 1/4 w, Comp	F8
R20	107972	3300 Ohm, 5%, 1/4 w, Comp	J4	R89	223769	100000 Ohm, 5%, 1/4 w, Comp	C7
R21	223769	100000 Ohm, 5%, 1/4 w, Comp	J4	R90	108865	1000 Ohm, 5%, 1/4 w, Comp	C7
R22	223769	100000 Ohm, 5%, 1/4 w, Comp	J7	R91	232389	470000 Ohm, 5%, 1/4 w, Comp	C7
R23	426219	33000 Ohm, 5%, 1/4 w, Comp	J7	R92	218499	10000 Ohm, 5%, 1/4 w, Comp	C7
R24	108870	18000 Ohm, 5%, 1/4 w, Comp	I8	R93	231315	1500000 Ohm, 5%, 1/4 w, Comp	D7
R25	108870	18000 Ohm, 5%, 1/4 w, Comp	J8	R94	239954	5600 Ohm, 2%, 1/4 w, Film	D7
R26	218499	10000 Ohm, 5%, 1/4 w, Comp	J8	R95	239954	5600 Ohm, 2%, 1/4 w, Film	D7
R27	219459	1500 Ohm, 5%, 1/4 w, Comp	G6	R96	223769	100000 Ohm, 5%, 1/4 w, Comp	D7
R29	108861	100 Ohm, 5%, 1/4 w, Comp	G7	R97	218762	1000000 Ohm, 5%, 1/4 w, Comp	D7
R30	219465	8200 Ohm, 5%, 1/4 w, Comp	H9	R98	218499	10000 Ohm, 5%, 1/4 w, Comp	E7
R31	218499	10000 Ohm, 5%, 1/4 w, Comp	H9	R99	239954	5600 Ohm, 2%, 1/4 w, Film	E7
R32	218758	220 Ohm, 5%, 1/4 w, Comp	G9	R100	219458	330 Ohm, 5%, 1/4 w, Comp	E6
R33	426216	68 Ohm, 5%, 1/4 w, Comp	G9	R101	426199	56000 Ohm, 5%, 1/4 w, Comp	E4
R34	426232	10 Ohm, 5%, 1/4 w, Comp	F9	R102	239954	5600 Ohm, 2%, 1/4 w, Film	E4
R35	233931	33 Ohm, 5%, 1/4 w, Comp	F9	R103	108865	1000 Ohm, 5%, 1/4 w, Comp	D4
R36	108863	270 Ohm, 5%, 1/4 w, Comp	F9	R104	108871	47000 Ohm, 5%, 1/4 w, Comp	D4
R37	224252	560 Ohm, 1/2 w, Comp	D9	R105	433018	390 Ohms, 5%, 1/4 w, Comp	D4
R38	426232	10 Ohm, 5%, 1/4 w, Comp	D9	R106	107972	3300 Ohm, 5%, 1/4 w, Comp	C4
R39	108861	100 Ohm, 5%, 1/4 w, Comp	D9	R107	218500	39000 Ohm, 5%, 1/4 w, Comp	C5
R40	426213	4700 Ohm, 5%, 1/4 w, Comp	A9	R108	218499	10000 Ohm, 5%, 1/4 w, Comp	C5
R41	223769	100000 Ohm, 5%, 1/4 w, Comp	B7	R109	227744	150 Ohm, 5%, 1/4 w, Comp	C5
R42	219459	1500 Ohm, 5%, 1/4 w, Comp	A8	R110	426219	33000 Ohm, 5%, 1/4 w, Comp	A6
R43	107972	3300 Ohm, 5%, 1/4 w, Comp	G1	R111	108860	47 Ohm, 5%, 1/4 w, Comp	C5
R44	108870	18000 Ohm, 5%, 1/4 w, Comp	G1	R112	108860	47 Ohm, 5%, 1/4 w, Comp	F7
R45	218499	10000 Ohm, 5%, 1/4 w, Comp	G1	R113	426112	22000 Ohm, 5%, 1/4 w, Comp	A5
R46	227741	560 Ohm, 5%, 1/4 w, Comp	F1	R114	108871	47000 Ohm, 5%, 1/4 w, Comp	A5
R47	108865	1000 Ohm, 5%, 1/4 w, Comp	E1	R115	232687	270000 Ohm, 5%, 1/4 w, Comp	A5
R48	219458	330 Ohm, 5%, 1/4 w, Comp	F2	R116	426219	33000 Ohm, 5% 1/4 w, Comp	A5
R49	108871	47000 Ohm, 5%, 1/4 w, Comp	H3	R117	427566	68,000 Ohm, 1/4 w, 5%, Comp	A5
R50	223769	100000 Ohm, 5%, 1/4 w, Comp	G3	R118	108871	47000 Ohm, 5%, 1/4 w, Comp	A5
R51	219458	330 Ohm, 5%, 1/4 w, Comp	H4	R119		Not used	A6
R52	107972	3300 Ohm, 5%, 1/4 w, Comp	G4	R120	108865	1000 Ohm, 5%, 1/4 w, Comp	C6
R53	227465	120 Ohm, 5%, 1/4 w, Comp	G4	R121	218762	1000000 Ohm, 5%, 1/4 w, Comp	C6
R54	108865	1000 Ohm, 5%, 1/4 w, Comp	H4	R122	426215	680 Ohms, 1/4 w, 5%, Comp	B6
R55	227741	560 Ohm, 5%, 1/4 w, Comp	G4	R123	108865	1000 Ohm, 5%, 1/4 w, Comp	B6
R56	239954	5600 Ohm, 2%, 1/4 w, Film	H4	R124	218499	10000 Ohm, 5%, 1/4 w, Comp	B6
R57	108868	12000 Ohm, 5%, 1/4 w, Comp	F5	R125	218499	10000 Ohm, 5%, 1/4 w, Comp	F3
R58	107972	3300 Ohm, 5%, 1/4 w, Comp	G4	R126	108866	2200 Ohm, 5%, 1/4 w, Comp	F3
R59	107972	3300 Ohm, 5%, 1/4 w, Comp	G2	R127	108865	1000 Ohm, 5%, 1/4 w, Comp	F3
R60	227744	150 Ohm, 5%, 1/4 w, Comp	G5	R128	426112	22000 Ohm, 5%, 1/4 w, Comp	E3
R61	426234	820 Ohms, 10%, 1/4 w, Fixed Comp	F6	R129	219467	27000 Ohm, 5%, 1/4 w, Comp	E2
R62	426213	4700 Ohm, 5%, 1/4 w, Comp	G5	R130	239954	5600 Ohm, 2%, 1/4 w, Film	E2
R63	227741	560 Ohm, 5%, 1/4 w, Comp	G5	R131	239954	5600 Ohm, 2%, 1/4 w, Film	E2
R64	218758	220 Ohm, 5%, 1/4 w, Comp	F6	R132	218499	10000 Ohm, 5%, 1/4 w, Comp	D1
R65	426213	4700 Ohm, 5%, 1/4 w, Comp	F5	R133	426213	4700 Ohm, 5%, 1/4 w, Comp	D2
R66	108864	470 Ohm, 5%, 1/4 w, Comp	F6	R134	227741	560 Ohm, 5%, 1/4 w, Comp	D1
R67	108870	18000 Ohm, 5%, 1/4 w, Comp	F3	R135	426234	820 Ohms, 10%, 1/4 w, Fixed Comp	C2
R68	108861	100 Ohm, 5%, 1/4 w, Comp	E6	R136	108860	47 Ohm, 5%, 1/4 w, Comp	C1
R69	107972	3300 Ohm, 5%, 1/4 w, Comp	E5	R137	108865	1000 Ohm, 5%, 1/4 w, Comp	D2
R70	108869	15000 Ohm, 5%, 1/4 w, Comp	E6				
R71	219459	1500 Ohm, 5%, 1/4 w, Comp	D5				
R72	227744	150 Ohm, 5%, 1/4 w, Comp	E6				

(Continued on Page 25)

SYMB. NO.	STOCK NO.	DESCRIPTION	LOCA-TION	SYMB. NO.	STOCK NO.	DESCRIPTION	LOCA-TION
R138	227744	150 Ohm, 5%, 1/4 w, Comp	D2	T3	742518	Transformer - IF	J5
R139	218499	10000 Ohm, 5%, 1/4 w, Comp	D3	T4	742649	Transformer - RF	H8
R140	108865	1000 Ohm, 5%, 1/4 w, Comp	C4	T5	742650	Transformer - RF	H8
R141	426213	4700 Ohm, 5%, 1/4 w, Comp	B3	T6	742651	Transformer - RF	F9
R142	108866	2200 Ohm, 5%, 1/4 w, Comp	B3	T7	741714	Transformer - RF	B8
R143	108866	2200 Ohm, 5%, 1/4 w, Comp	C4	T8	742649	Transformer - RF	D8
R144	426213	4700 Ohm, 5%, 1/4 w, Comp	C4	T9	741712	Transformer - RF	D8
R145	107972	3300 Ohm, 5%, 1/4 w, Comp	D2	T10	742657	Transformer - IF	F8
R146	108865	1000 Ohm, 5%, 1/4 w, Comp	C3	T11	742659	Transformer - IF	F6
R147	107972	3300 Ohm, 5%, 1/4 w, Comp	D3	T12	742659	Transformer - IF	D6
R150	742721	18 Ohm, 2 w, Film - Metal Oxide	D3	T13	742658	Transformer - IF	E4
R151	113524	2700 Ohm, 1/4 w, Comp	E5	T14	742655	Transformer - IF	D4
R152	113524	2700 Ohm, 1/4 w, Comp	E5	T15	742656	Transformer - IF	C5
R153	113524	2700 Ohm, 1/4 w, Comp	E5	T16	742835	Transformer-Audio	A4
R154	113524	1700 Ohm, 1/4 w, Comp	E2				
R155	113524	2700 Ohm, 1/4 w, Comp	E2	VCO	742680	Oscillator Block-17 MHZ	I3
R156	113524	2700 Ohm, 1/4 w, Comp	E2				
R157	228913	390 Ohm, 1/2 w, Film Metal Oxide	F6	VR1	742495	50000 Ohm, Var Linear	FP
R158	742722	10 Ohm, 2 w, Film Metal Oxide	F7	VR2	742642	50000 Ohm, Var-Linear	FP
R159	108864	470 Ohm, 5%, 1/4 w, Comp	G7	VR3	742641	50000 Ohm, Var Linear	FP
R160	431134	270 Ohm, 2%, 1/2 w, Film	I9	VR4	742640	10 Ohm, 10 w, Pwr Wirewound	FP
R161	742626	150 Ohm, 1 w, Film	I9	VR5	742559	200 Ohm, Var (Dual)	FP
R162	742626	150 Ohm, 1 w, Film	J9	VR6	742559	200 Ohm, Var (Dual)	FP
R163	108869	15000 Ohm, 5%, 1/4 w, Comp	C4	VR7	742496	10000 Ohm, Var Linear	FP
R165	227755	220000 Ohm, 5%, 1/4 w, Comp	C4				
R166	108865	1000 Ohm, 5%, 1/4 w, Comp	B5	X1	742660	Crystal - 10.0525 MHZ	I6
R167	107972	3300 Ohm, 5%, 1/4 w, Comp	H8	X2	742506	Crystal - 10.24000 MHZ	J4
R168	239954	5600 Ohm, 2%, 1/4 w, Film	D3	X3	742661	Crystal - 10.692 MHZ	G1
R169	426199	56000 Ohm, 5%, 1/4 w, Comp	I9				
R201	426199	56000 Ohm, 5%, 1/4 w, Comp	FP				
R202	433018	390 Ohm, 5%, 1/4 w, Comp	FP				
R501	108861	100 Ohm, 5%, 1/4 w, Comp	SWR	1	742612	Panel-Front	FP
R502	108861	100 Ohm, 5%, 1/4 w, Comp	SWR	2	741824	Holder - Lamp CH/TX	FP
R503	108865	1000 Ohm, 5%, 1/4 w, Comp	SWR	3	742678	Lamp	FP
	239954	5600 Ohm, 5%, 1/4 w, Comp	LC1	4	742559	200 Ohm, Var (Dual)	FP
	742566	RES Array, 1800 Ohm x 7 1/4 w Comp	LC1	5	742496	10000 Ohm, Var Linear	FP
				6	742641	50000 Ohm, Var Linear	FP
RV1	742634	100 Ohm, Var (Semi)	D9	7	742642	50000 Ohm, Var-Linear	FP
RV2	742508	5000 Ohm, Var (Semi)	A7	8	742495	50000 Ohm, Var Linear	FP
RV3	741709	20,000 Ohm, Var	A8	9	742646	Switch-Rotary-Snap	FP
RV4	742629	1000 Ohm, Var (Semi)	H3	10	741817	Switch - Slide	FP
RV5	741707	10,000 Ohm, Var	G3	11	742645	Switch	FP
RV6	741707	10,000 Ohm, Var	A7	12	742674	Meter-500 UA-S/RF/SWR	FP
RV7	741707	10,000 Ohm, Var	B7	13	742615	Bracket-Meter MTG	FP
RV8	742508	5000 Ohm, Var (Semi)	B6	16	742640	10 Ohm, 10 w, Pwr Wirewound	SP
RV9	741709	20,000 Ohm, Var	F1	18	741815	Connector - Jack Microphone	SP
RV10	742630	200000 Ohm, Var (Semi)	F2	19	742504	Washer-Mike Jack	SP
RV11	742632	500 Ohm, Var (Semi)	E3	21	742497	Connector-Jack-Ant	RP
RV12	741708	2,000 Ohm, Var	A3	23	741816	Connector-Jack P.A.	RP
RV501	742631	5000 Ohm, Var (Semi)	SWR	26	742686	Terminal-Jack	RP
				27	741819	Connector - Jack DC	RP
				28	742719	Terminal - DC Jack	RP
S1	742495	50000 Ohm, Var Linear	FP	36	742576	Escutcheon Assem	FP
S2	742646	Switch-Rotary-Snap	FP	37	742542	Knob Assem - CH	FP
S3	742642	50000 Ohm, Var-Linear	FP	38	742720	Washer-Buffer CH Knob	FP
S4	741817	Switch - Slide	FP	39	741823	Knob - VR	FP
S5	741817	Switch - Slide	FP	42	741845	Speaker	CB
S6	742645	Switch	FP	43	742013	Bracket - Speaker MTG	CB
SP	741845	Speaker	CB		742614	Bracket-Unit MTG	
					742572	Cord Assem-DC	
SW1	742571	Switch - Rotary - CH	J2		742671	Fuse-3A 250 v	
					741825	Holder - Microphone	
T1	741720	Transformer - RF	I6		741745	Insulator Mylar Sheet	
T2	742519	Transformer - RF	I7		741826	Microphone - CB	
					741813	Spacer Crystal	