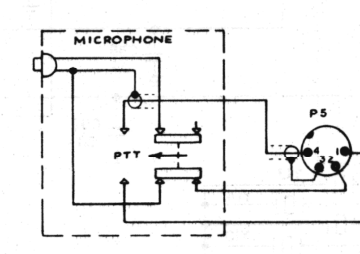
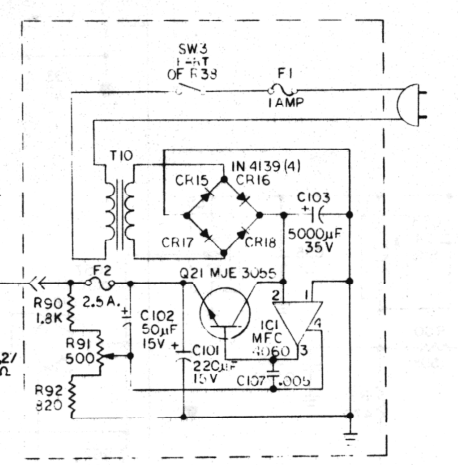


- NOTES:
1. \perp DENOTES AUDIO, SYNTHESIZER & CHASSIS GROUND.
 2. ∇ DENOTES RCVR GROUND.
 3. DECIMAL CAPACITOR VALUES IN UFD. ALL OTHERS IN PF UNLESS OTHERWISE SPECIFIED. ALL RESISTOR VALUES IN OHMS.
 4. SW4 SHOWN IN CHANNEL 23 POSITION.
 5. * SELECTED VALUES, SEE SERVICE INFO.
 6. AREA ENCLOSED IN DASHED LINES ARE COMPONENTS LOCATED ON FREQUENCY SYNTHESIZER P.C. BOARD AND POWER SUPPLY.
 7. FREQUENCY SYNTHESIZER CRYSTAL FREQUENCIES ARE AS FOLLOWS:

Y1 - 8.206 MHz	Y8 - 8.421 MHz
Y2 - 7.306 MHz	Y9 - 3.4971 MHz
Y3 - 7.986 MHz	Y10 - 35.021 MHz
Y4 - 7.966 MHz	Y11 - 35.071 MHz
Y5 - 8.061 MHz	Y12 - 35.121 MHz
Y6 - 8.151 MHz	Y13 - 35.171 MHz
Y7 - 8.141 MHz	Y14 - 35.221 MHz
 8. LAST REF. DES. USED:
C108 CR-20 DS² F2 IC1 J5 L12 Q22 R96 RFC9
R71 SW4 T11 Y14 M1.
 9. ■ MAY BE DELETED ON SOME MODELS.



SCHEMATIC DIAGRAM MODEL DX 2300B
 PATHCOM INC. PACE DIVISION
 11-0040 F

REV.	REVISION	DATE	BY
1394	REV. A	11-11-68	W. J. C.
1395	REV. B	11-11-68	W. J. C.
1396	REV. C	11-11-68	W. J. C.
1397	REV. D	11-11-68	W. J. C.
1398	REV. E	11-11-68	W. J. C.
1399	REV. F	11-11-68	W. J. C.
1400	REV. G	11-11-68	W. J. C.
1401	REV. H	11-11-68	W. J. C.
1402	REV. I	11-11-68	W. J. C.
1403	REV. J	11-11-68	W. J. C.
1404	REV. K	11-11-68	W. J. C.
1405	REV. L	11-11-68	W. J. C.
1406	REV. M	11-11-68	W. J. C.
1407	REV. N	11-11-68	W. J. C.
1408	REV. O	11-11-68	W. J. C.
1409	REV. P	11-11-68	W. J. C.
1410	REV. Q	11-11-68	W. J. C.
1411	REV. R	11-11-68	W. J. C.
1412	REV. S	11-11-68	W. J. C.
1413	REV. T	11-11-68	W. J. C.
1414	REV. U	11-11-68	W. J. C.
1415	REV. V	11-11-68	W. J. C.
1416	REV. W	11-11-68	W. J. C.
1417	REV. X	11-11-68	W. J. C.
1418	REV. Y	11-11-68	W. J. C.
1419	REV. Z	11-11-68	W. J. C.
1420	REV. AA	11-11-68	W. J. C.
1421	REV. AB	11-11-68	W. J. C.
1422	REV. AC	11-11-68	W. J. C.
1423	REV. AD	11-11-68	W. J. C.
1424	REV. AE	11-11-68	W. J. C.
1425	REV. AF	11-11-68	W. J. C.
1426	REV. AG	11-11-68	W. J. C.
1427	REV. AH	11-11-68	W. J. C.
1428	REV. AI	11-11-68	W. J. C.
1429	REV. AJ	11-11-68	W. J. C.
1430	REV. AK	11-11-68	W. J. C.
1431	REV. AL	11-11-68	W. J. C.
1432	REV. AM	11-11-68	W. J. C.
1433	REV. AN	11-11-68	W. J. C.
1434	REV. AO	11-11-68	W. J. C.
1435	REV. AP	11-11-68	W. J. C.
1436	REV. AQ	11-11-68	W. J. C.
1437	REV. AR	11-11-68	W. J. C.
1438	REV. AS	11-11-68	W. J. C.
1439	REV. AT	11-11-68	W. J. C.
1440	REV. AU	11-11-68	W. J. C.
1441	REV. AV	11-11-68	W. J. C.
1442	REV. AW	11-11-68	W. J. C.
1443	REV. AX	11-11-68	W. J. C.
1444	REV. AY	11-11-68	W. J. C.
1445	REV. AZ	11-11-68	W. J. C.
1446	REV. BA	11-11-68	W. J. C.
1447	REV. BB	11-11-68	W. J. C.
1448	REV. BC	11-11-68	W. J. C.
1449	REV. BD	11-11-68	W. J. C.
1450	REV. BE	11-11-68	W. J. C.
1451	REV. BF	11-11-68	W. J. C.
1452	REV. BG	11-11-68	W. J. C.
1453	REV. BH	11-11-68	W. J. C.
1454	REV. BI	11-11-68	W. J. C.
1455	REV. BJ	11-11-68	W. J. C.
1456	REV. BK	11-11-68	W. J. C.
1457	REV. BL	11-11-68	W. J. C.
1458	REV. BM	11-11-68	W. J. C.
1459	REV. BN	11-11-68	W. J. C.
1460	REV. BO	11-11-68	W. J. C.
1461	REV. BP	11-11-68	W. J. C.
1462	REV. BQ	11-11-68	W. J. C.
1463	REV. BR	11-11-68	W. J. C.
1464	REV. BS	11-11-68	W. J. C.
1465	REV. BT	11-11-68	W. J. C.
1466	REV. BU	11-11-68	W. J. C.
1467	REV. BV	11-11-68	W. J. C.
1468	REV. BW	11-11-68	W. J. C.
1469	REV. BX	11-11-68	W. J. C.
1470	REV. BY	11-11-68	W. J. C.
1471	REV. BZ	11-11-68	W. J. C.
1472	REV. CA	11-11-68	W. J. C.
1473	REV. CB	11-11-68	W. J. C.
1474	REV. CC	11-11-68	W. J. C.
1475	REV. CD	11-11-68	W. J. C.
1476	REV. CE	11-11-68	W. J. C.
1477	REV. CF	11-11-68	W. J. C.
1478	REV. CG	11-11-68	W. J. C.
1479	REV. CH	11-11-68	W. J. C.
1480	REV. CI	11-11-68	W. J. C.
1481	REV. CJ	11-11-68	W. J. C.
1482	REV. CK	11-11-68	W. J. C.
1483	REV. CL	11-11-68	W. J. C.
1484	REV. CM	11-11-68	W. J. C.
1485	REV. CN	11-11-68	W. J. C.
1486	REV. CO	11-11-68	W. J. C.
1487	REV. CP	11-11-68	W. J. C.
1488	REV. CQ	11-11-68	W. J. C.
1489	REV. CR	11-11-68	W. J. C.
1490	REV. CS	11-11-68	W. J. C.
1491	REV. CT	11-11-68	W. J. C.
1492	REV. CU	11-11-68	W. J. C.
1493	REV. CV	11-11-68	W. J. C.
1494	REV. CW	11-11-68	W. J. C.
1495	REV. CX	11-11-68	W. J. C.
1496	REV. CY	11-11-68	W. J. C.
1497	REV. CZ	11-11-68	W. J. C.
1498	REV. DA	11-11-68	W. J. C.
1499	REV. DB	11-11-68	W. J. C.
1500	REV. DC	11-11-68	W. J. C.