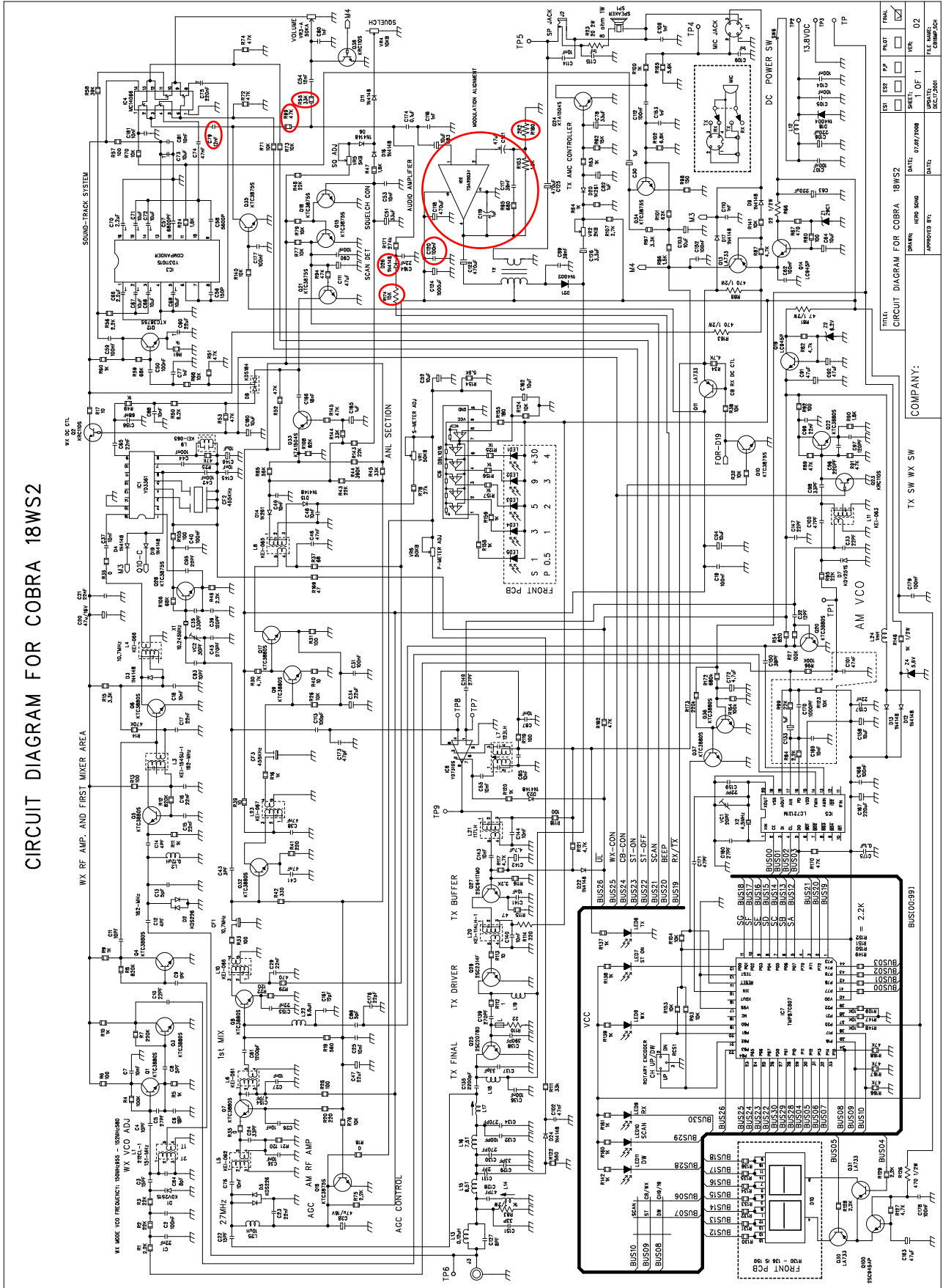
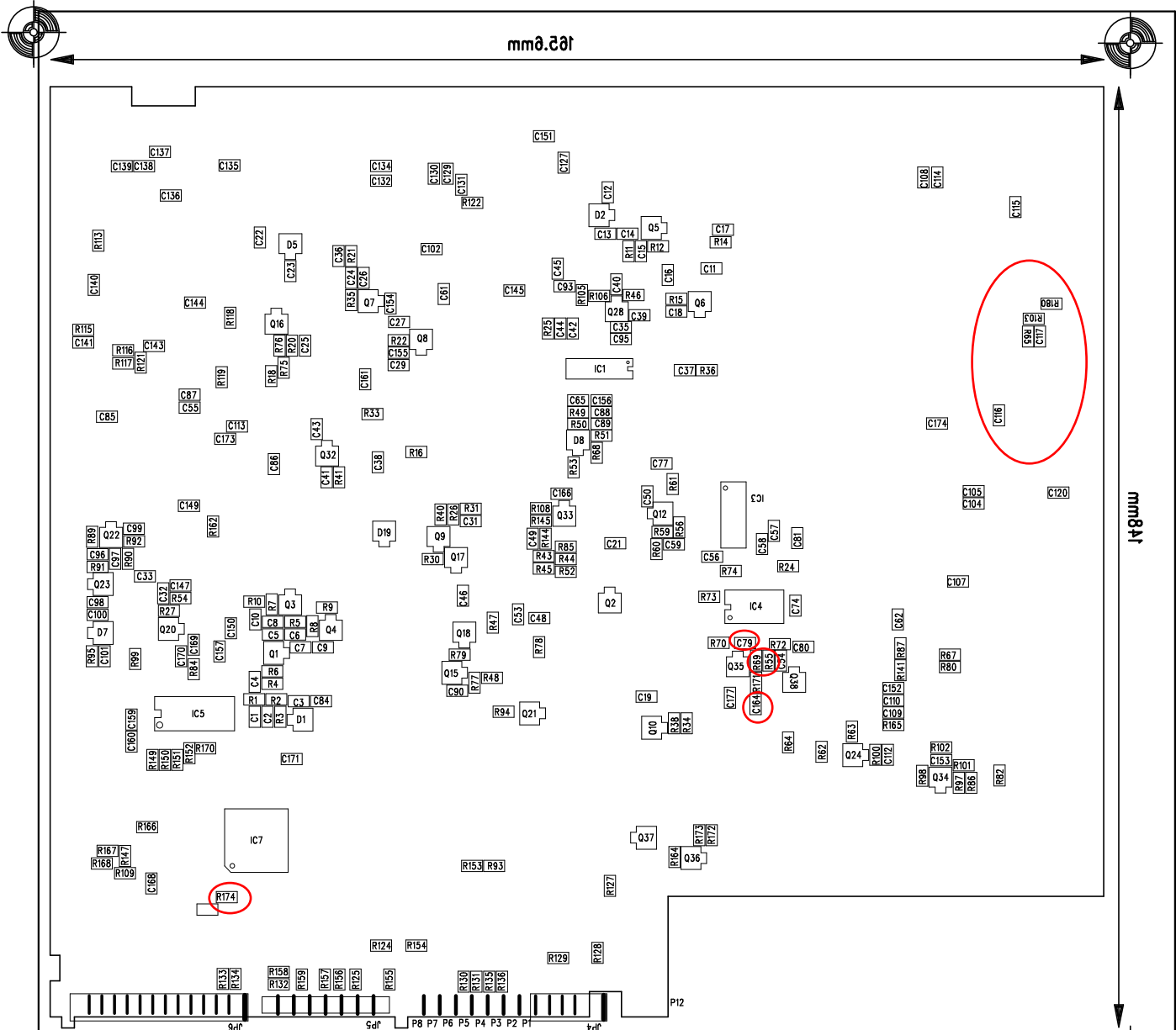


18 WX ST II with TDA2003 Audio Amp

CIRCUIT DIAGRAM FOR COBRA 18WS2

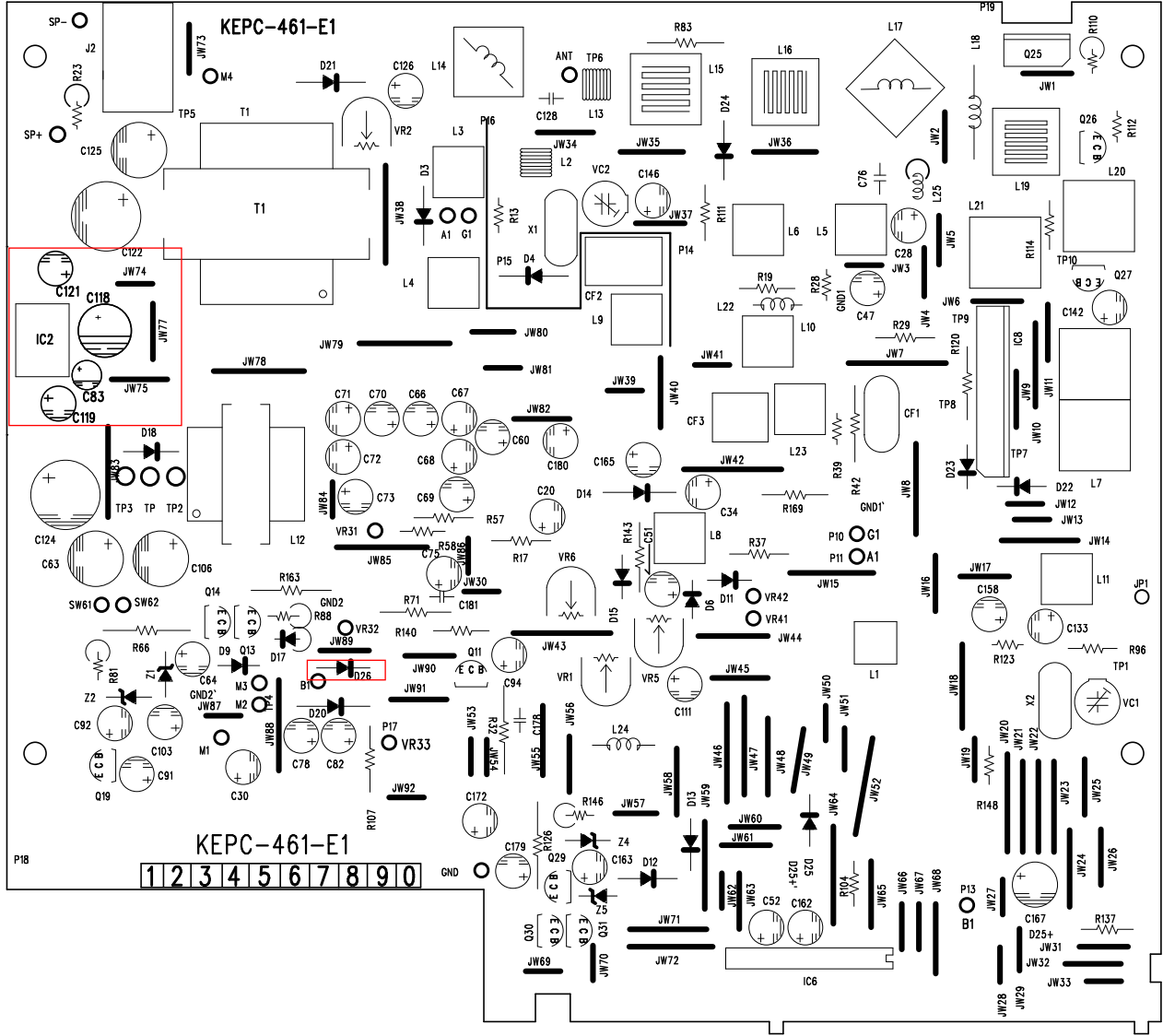




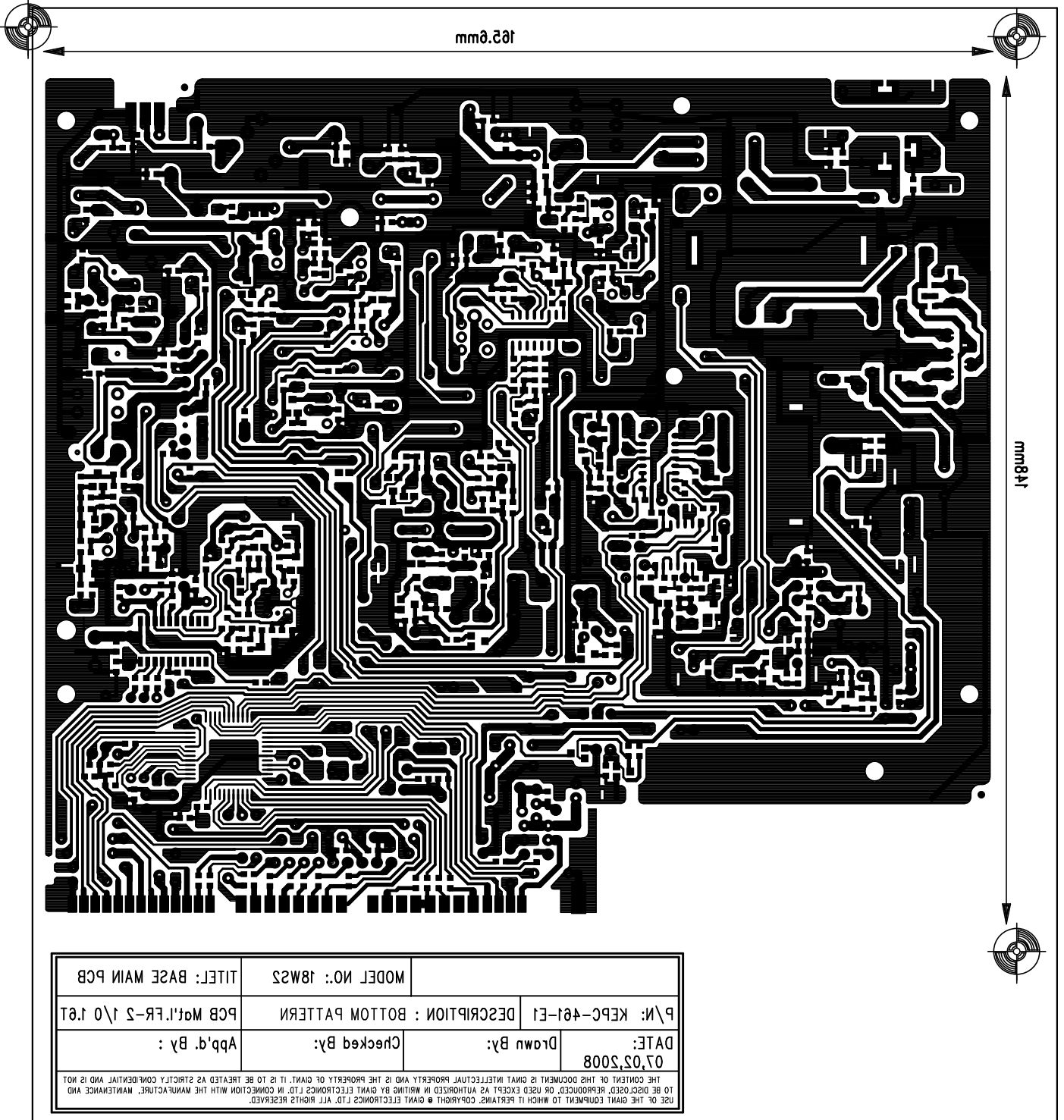
DATE: 07_02_2008		Drawn By: _____		Checked By: _____		App'd. By: _____	
P/N: KEPC-461-E1				DESCRIPTION : BOTTOM SILK SCREEN			
PCB Mat'l.F.R-2 \10 1.61				TITLE: BASE MAIN PCB			
MODEL NO.: 18W2S		TITEL: BASE MAIN PCB					

165.6mm

148mm



		MODEL NO.: 18WS2	TITEL: BASE MAIN PCB
P/N: KEPC-461-E1	DESCRIPTION : TOP SILK SCREEN		PCB Mat'l.FR-2 1/0 1.6T
DATE: 07,02,2008	Drawn By:	Checked By:	App'd. By :
<small>THE CONTENT OF THIS DOCUMENT IS GIANT INTELLECTUAL PROPERTY AND IS THE PROPERTY OF GIANT. IT IS TO BE TREATED AS STRICTLY CONFIDENTIAL AND IS NOT TO BE DISCLOSED, REPRODUCED, OR USED EXCEPT AS AUTHORIZED IN WRITING BY GIANT ELECTRONICS LTD. IN CONNECTION WITH THE MANUFACTURE, MAINTENANCE AND USE OF THE GIANT EQUIPMENT TO WHICH IT PERTAINS. COPYRIGHT © GIANT ELECTRONICS LTD. ALL RIGHTS RESERVED.</small>			



DATE: 07.02.2008		Drawn By:	Checked By:	Abp.d. By :
P\N: KEPC-461-E1		DESCRIPTION : BOTTOM PATTERN		
PCB Mod.I.FR-2 \10 1.61		TITLE: BASE MAIN PCB		
MODEL NO.: 18W23				

THE CONTENT OF THIS DOCUMENT IS GIANT INTELLECTUAL PROPERTY AND IS THE PROPERTY OF GIANT. IT IS TO BE TREATED AS STRICTLY CONFIDENTIAL AND IS NOT TO BE DISCLOSED, REPRODUCED, OR USED EXCEPT AS AUTHORIZED IN WRITING BY GIANT ELECTRONICS LTD. IN CONNECTION WITH THE MANUFACTURE, MAINTENANCE AND REPAIR OF THE GIANT EQUIPMENT TO WHICH IT PERTAINS. COPYRIGHT © GIANT ELECTRONICS LTD. ALL RIGHTS RESERVED.