

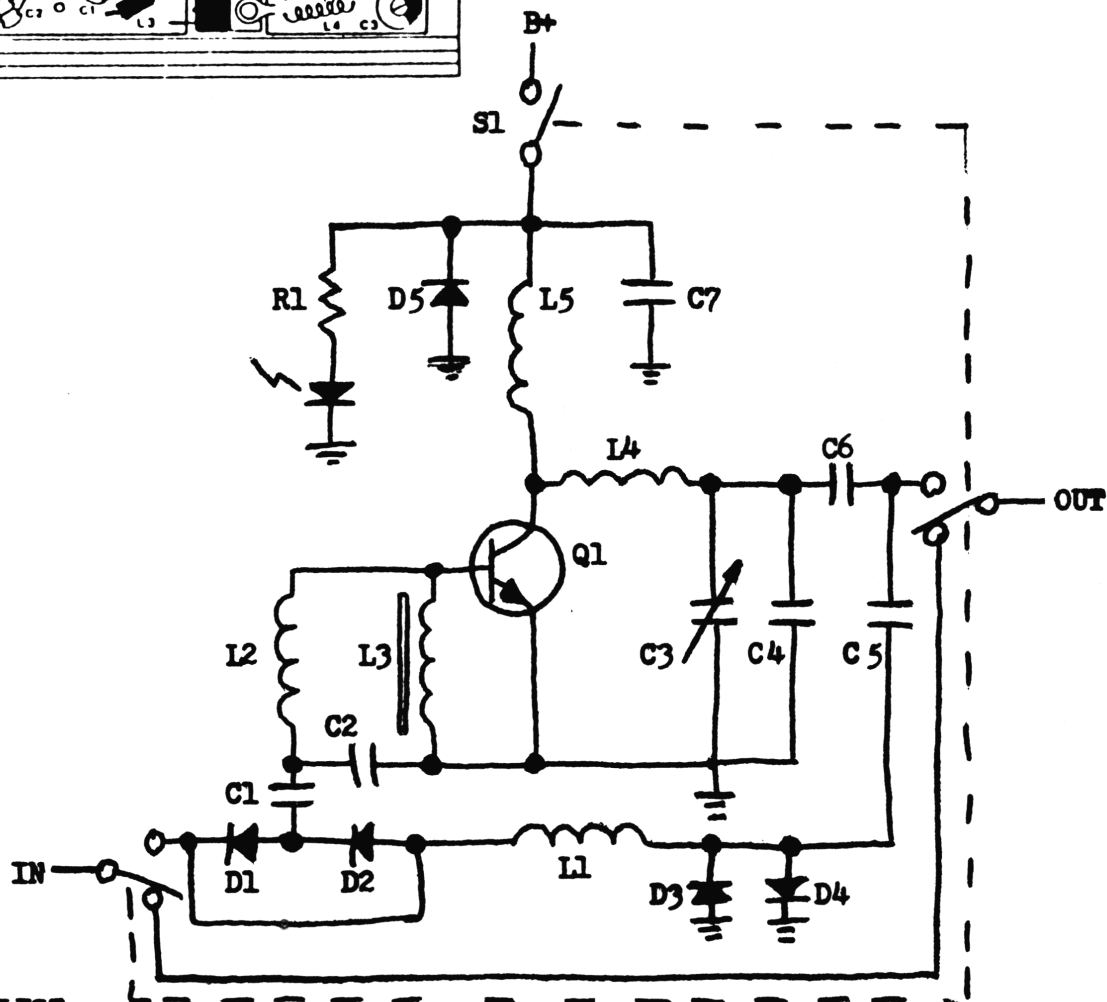
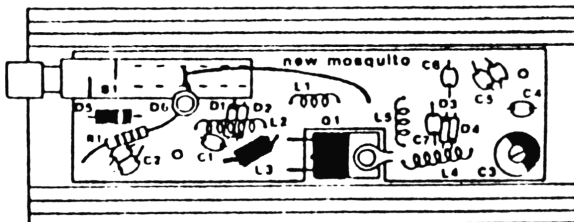
MOSQUITO

By Moses Horowitz

Nice little Amp rated at 50W MAX at 7W input, but don't see it even maintaining 30W for very long. If you happen to purchase/obtain.

Set up radio for giving 20W MAX, out of amp and will probably last forever! (Check R.F. Transistor specs of whichever is found in unit.)

2SC1307 - 25W/8A
 2SC1969 - 20W/6A
 MRF475 - 12W



PARTS LIST:

- | | | |
|----------------------|-------------|-------------------------------------|
| R1 - 820 ohm | C6 - 33pf | D5 - BY255 |
| C1 - 68pf NPO | C7 - 100Mf | D6 - LED, 5mm |
| C2 - 160pf | D1 - 1N4148 | Q1 - 2SC1307, 2SC1969,
or MRF475 |
| C3 - 10-60pf trimmer | D2 - 1N4148 | |
| C4 - 100pf | D3 - 1N4148 | |
| C5 - 130pf | D4 - 1N4148 | |