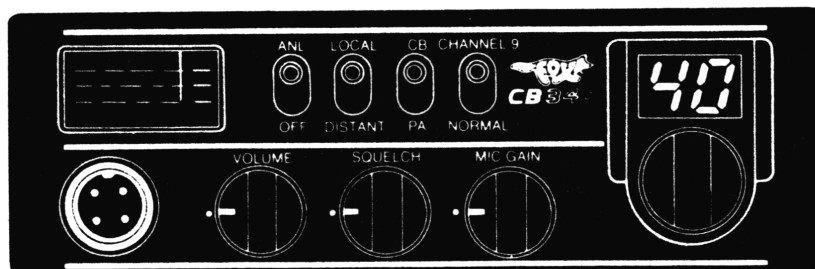


Fox 340, (LC7131-PLL)



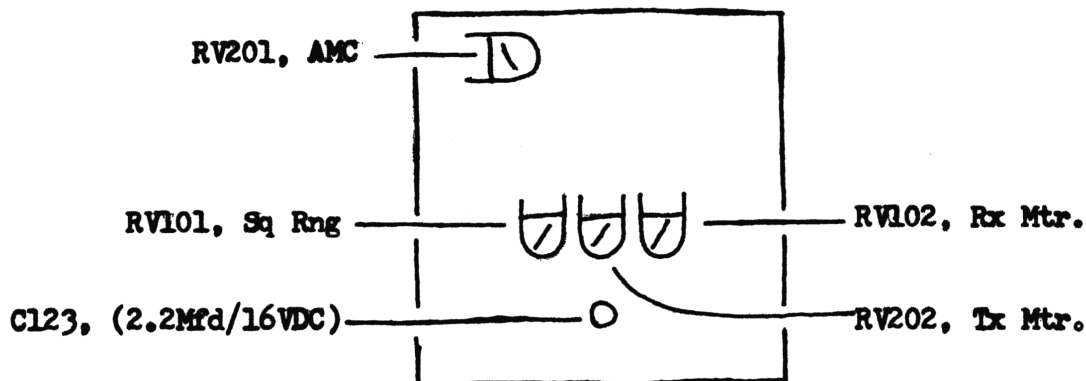
S/N: 0003690, out of the box.... 3W, 70% modulation at max mike gain.

Tune-up: TX - L301, L302, L303, L304, L305, and L306.

RX - L101, L102, L103, L104, L105, L106, and L107

RV201 - AMC; RV202 - TX Mtr; RV101 - Sq Rng; RV102 - RX Mtr.
C123 was changed to a 3.3Mfd/50VDC for additional noise limiting.

Final setup after tune-up was: 4.1W/100% modulation at max mike gain.



A GOOD SCHEMATIC, is needed for reproduction.....

Fox Mils. 240, 340, 440

The following resistors may be lowered in value for RF output power increase - USE CAUTION:

240 - R85 and R87, either or both.

340 - R330 and R332, either or both.

440 - R92 and R94, either or both.