

PACIFIC 800 SSB (UPDATE)

Why didn't someone mention that the PCB on this particular unit has no markings for parts designation? Hard enough to find schematics; and line-ups on 'Exports'; but a parts layout? GOOD LUCK...

I did notice one thing about the PCB itself. Seems that the same board is used for another unit as had places for additional crystals. BEWARE of another popping up from the same outfit (Re: Petrusse Pacific 160).

Out-of-box, was O.K. and didn't want to do much in way of 'poking' around, as didn't know what-was-what. One thing I will say about the unit is that the RF Gain, and Noise Circuitry are excellent!

Played with PLL logic (no realignment to circuitry) to see just how far unit would stretch and keep power up, pleasant surprise here. 26.325-28.320MHz (in 10KHz and 5KHz increments) as this chip is very versatile. Also see Vol. 18, for Slide/Fo mod.

<u>Frequency</u>	<u>Selector</u>	<u>Band Switch</u>	<u>PLL Logic Strapping</u>
26.325-26.685	1-32	A	11-0
26.510-26.730 (5KHz increment)	1-40	A	6-0
26.775-27.135	1-32	B	11-0
27.790-28.010 (5KHz increment)	1-40	A	6-0, 9-1
27.865-27.965	22-32	A	10-1, 11-0
28.055-28.375	1-28	B	10-1, 11-0
28.240-28.380 (5KHz increments)	1-25	B	6-0, 9-1, 10-0

Logic 1 - Pin 1 of PLL; may be applied directly to pin. (Exception-Pin 9, must be isolated from D.C. Ground by 5.1K resistor first.)

Logic 0 - Open line to pin from selector. (Chip has pull-down resistors built in.)

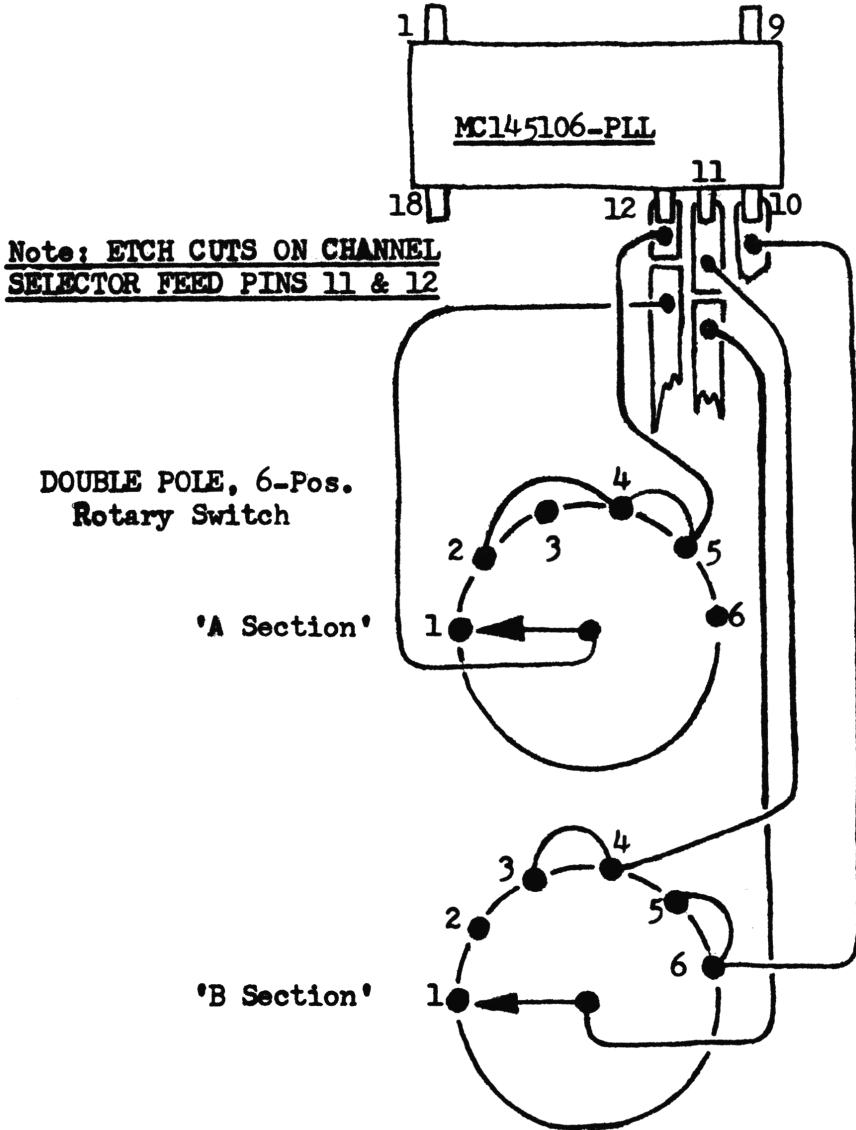
Pin 6, has no connection on the PCB.

Put Slide/Fo conversion from Vol. 18 in unit and 'let it go at cost', with "2 step warranty"!!

WOULD LIKE TO HAVE ANOTHER BUT ONLY IF I CAN OBTAIN THE PARTS LAYOUT, UNTIL THEN CAN COLLECT DUST ON THE 'DEALERS SHELVES'....

PACIFIC 800 SSB (UPDATE)  
Rotary Switch Modification

Below is modification I use on the Pacific 800 SSB; it allows a frequency coverage of: 26.225-28.415MHz.



- Pos. 1 - Range Switch 'A'.. 26.225-26.365MHz, selector pos. 19-32
- Pos. 2 - Range Switch 'A'.. 26.325-26.685MHz, selector pos. 1-32
- Pos. 3 - Range Switch 'A'.. 26.695-27.005MHz, selector pos. 5-32
- Pos. 4 - Range Switch 'A'.. 26.965-27.405MHz, selector pos. 1-40  
Range Switch 'B'.. 27.415-27.855MHz, selector pos. 1-40
- Pos. 5 - Range Switch 'A'.. 27.605-27.965MHz, selector pos. 1-32  
Range Switch 'B'.. 28.055-28.415MHz, selector pos. 1-32
- Pos. 6 - Range Switch 'B'.. 27.785-28.095MHz, selector pos. 5-32