

VCR VIDEO MODIFICATION
TRS-80 12" VIDEO DISPLAY (26-1201)

With this display showing up more and more in the neighborhood flea-markets it is a cinch to fix/modify for using to monitor your VCR or any video source, and still retain the computer use of it! It is really a RCA B/W T.V. without the tuner, and usually these can be picked up for spare parts at local T.V. shops by just hauling them away for free! Cheaper for people to buy new B/W T.V. than to have the old one fixed-so parts are no spares-just be sure to get R/S's Factory Service Manual on the unit so can cross reference to RCA, then to SAMS.... CAUTION: To anyone who tries this modification and hasn't any T.V. repair experience; be careful; as you will be working 10KV + in the chassis when turned on, and can still bite-off!

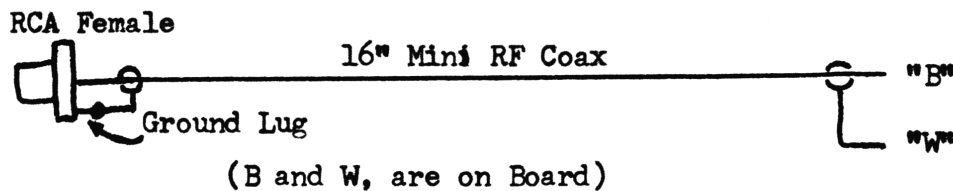
I built mine for \$12.48, including cost of display, using junk-box parts.

PARTS LIST

LED'S: Red-1, Green-1
Disc Capacitors: .1mfd/50V (2), .01mfd/50V (1)
Electrolytic Caps: 1000Mfd/20VDC-1, 250Mfd/35VDC-1
Bridge Rectifier: VM08 or equivalent
Transformer: 117VAC Pri-12VAC Sec. 300ma Min..
Voltage Regulator: LM7805 and heat sink (make out of beer can tab!)
Resistors: 680 ohm and 220 ohm, $\frac{1}{2}$ W 10%
Jack: RCA Female, chassis mount-with ground lug..
Switch: Double Pole-Single Throw, DO NOT TRY SPST...
Mini-RF Coax: 16"
Perfboard: any size you think you can breadboard the P/S mod on is O.K.
Misc. Wire is also needed, along with mounting hardware...

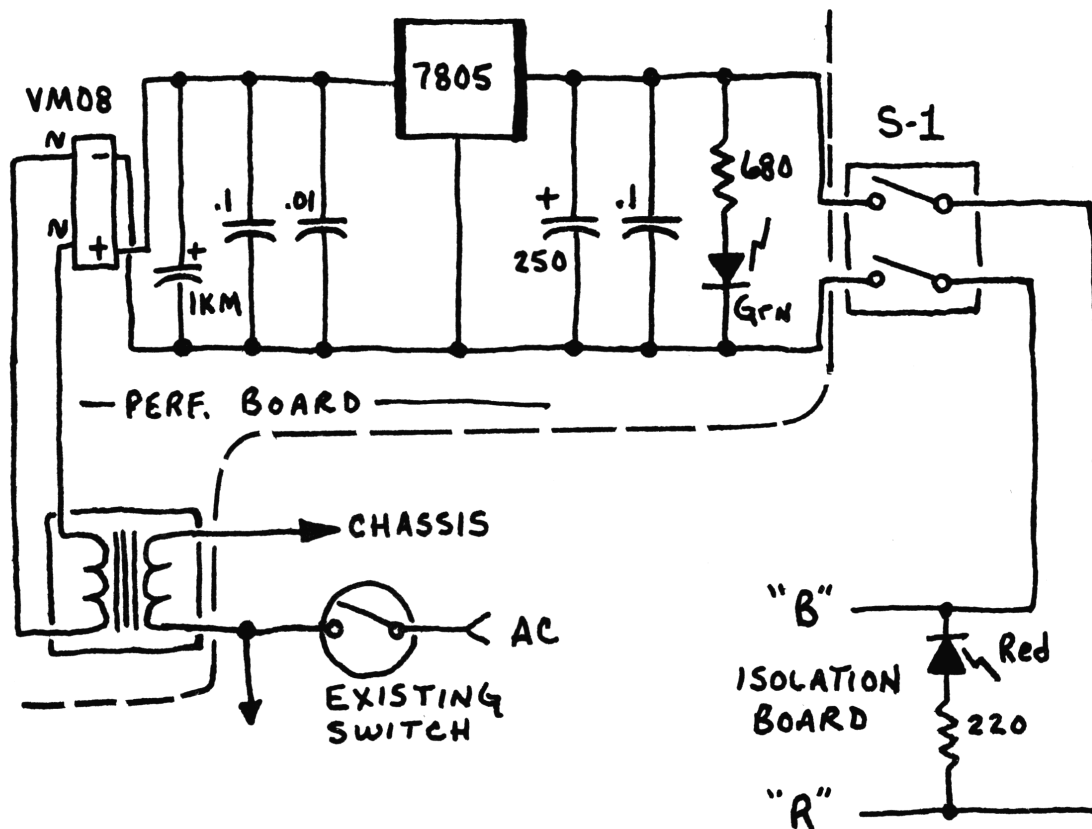
Diagram below is for wiring of the new Video input to Video Isolation Board.

Use the following parts for this and wire it correctly using the other diagrams for locations to mount...

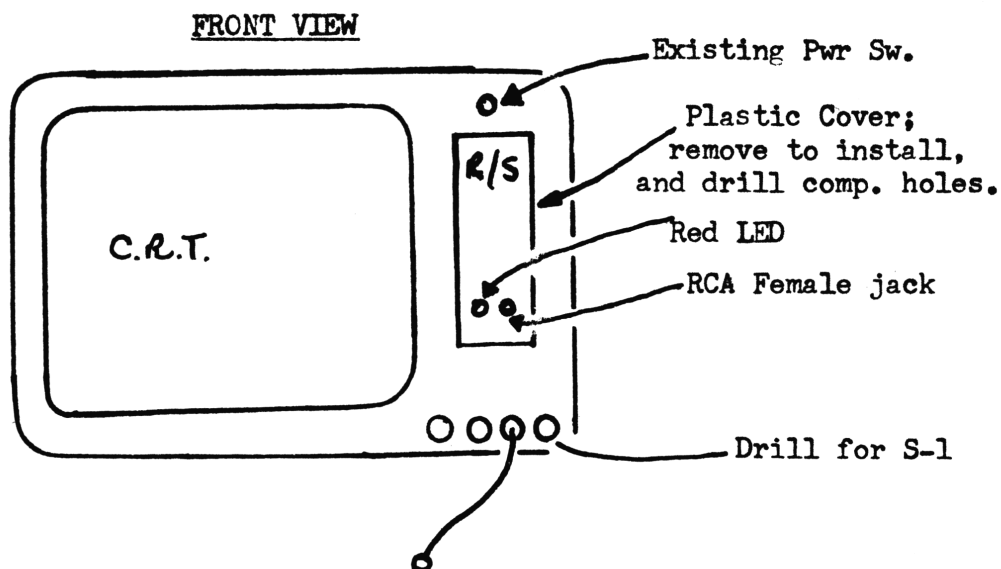


VCR VIDEO MOD. (Cont.)

Follow schematic/diagram below for building/wiring of Power Supply modification..DO NOT CHANGE IN ANY WAY THE WIRING.....



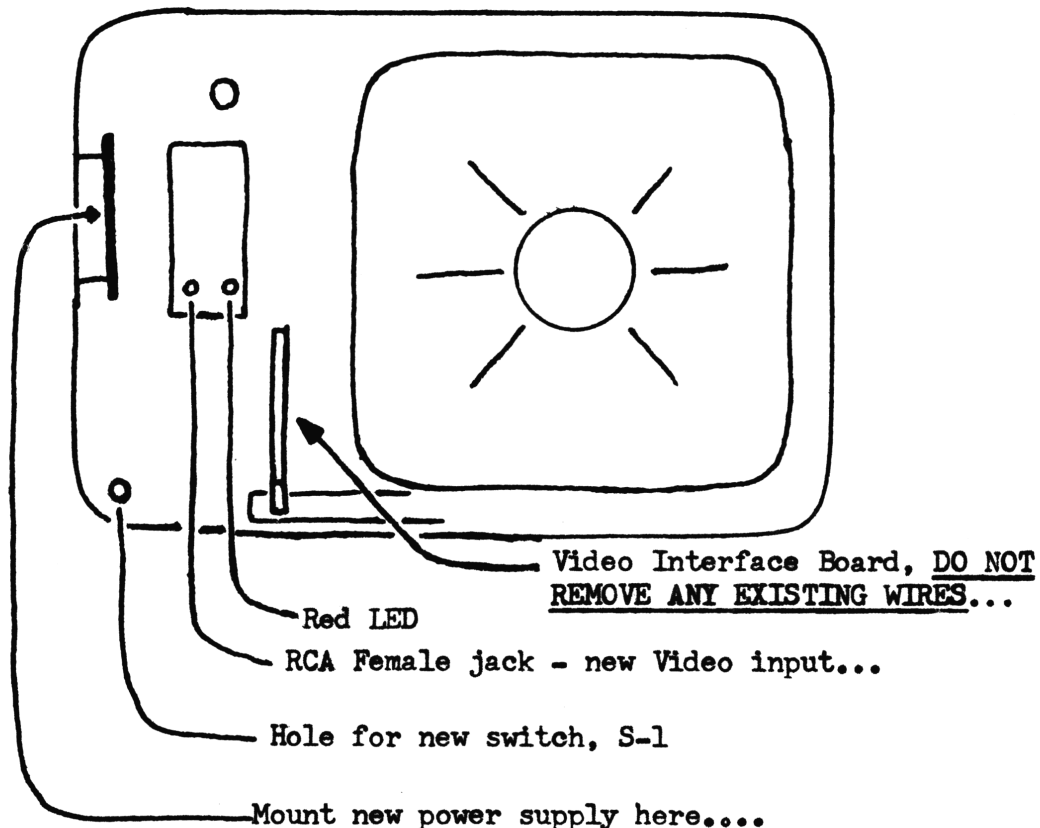
Follow Drawings for front and rear view of component mounting and for drilling holes:



VCR VIDEO MOD. (Cont.)

Note: When drilling hole for Red LED, obtain a rubber grommet to mount the LED in.

REAR VIEW



Directions for use:

Under no circumstances should the computer be plugged in when red LED is ON. When light is OFF can be used as usual with the computer, just be sure nothing is plugged into the new video jack.

For use as video monitor - remove plug from computer - Note: if you don't have computer just remove the plug and install new wiring to have an extra video jack for "video mixing" of the input (get some wierd pictures).. Just come out of Video Out jack of VCR to the new RCA jack and you got it...

VCR VIDEO MOD. (Cont.)

VIDEO ISOLATION CARD MODIFICATION

. . . Early to Late Version + . .

Check the card to see if it has a Zener diode above R-5 on the component side. If not, is early version - perform the following:

All resistors 1/2W 5%; Change R-16 to 2.2K

Change R-13 to 6.8K

Remove R-3, replace with 1N4742 Zener
(See diagram below for polarization-12V, 1W)

Add 68K 1/2W 5% as shown in diagram.

* Change R-5 to a 1K variable resistor, may have to enlarge holes a bit..set to mid-position before turning on the power...then adjust for best video on the CRT with an input....

. . . .Component Side of Card. . . .

(*) Do on late version if not done....

Correct orientation of
Zener.....

