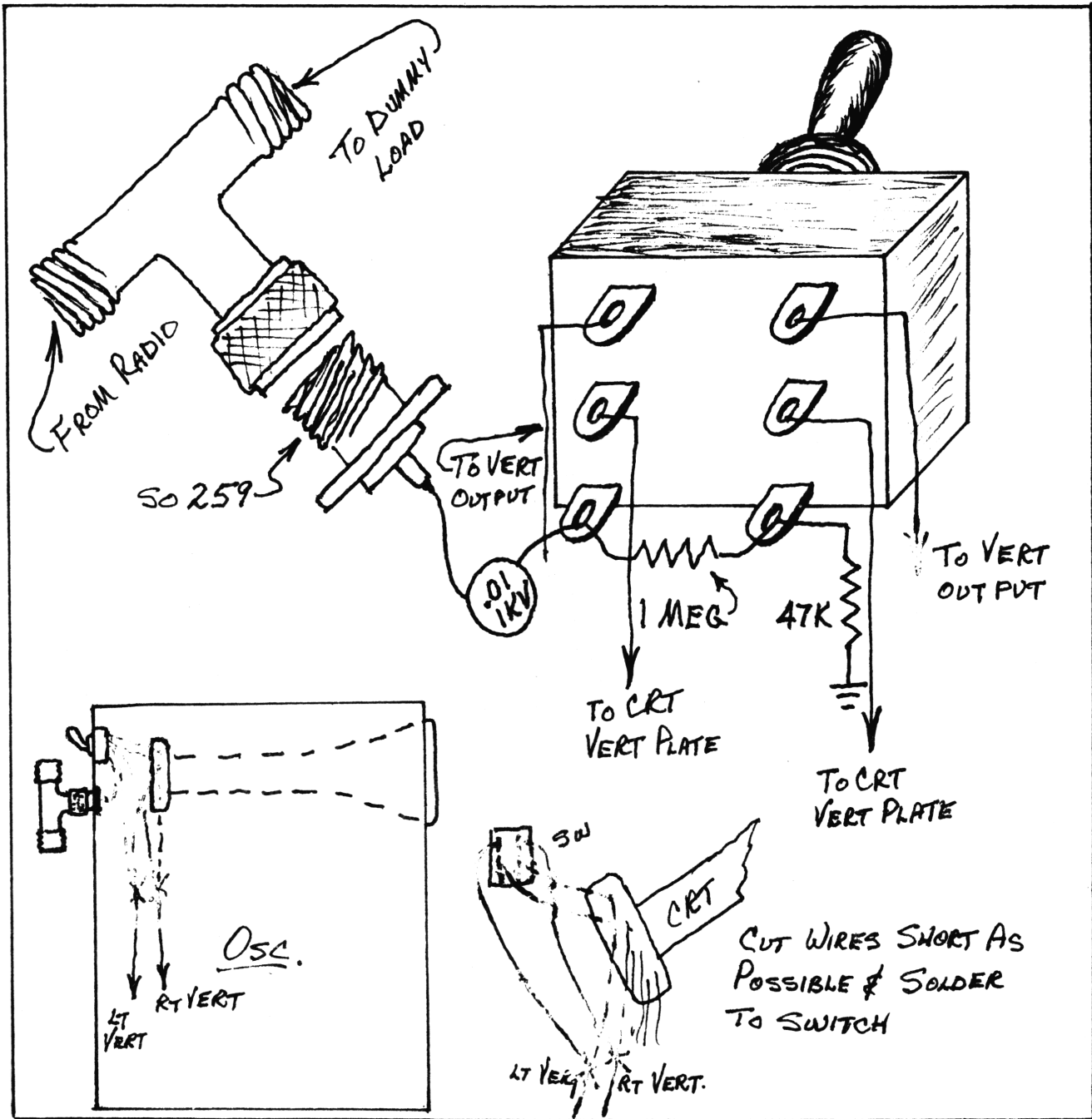


OSCILLOSCOPE MODIFICATION FOR RF & MODULATION DISPLAY



Install DPDT miniature toggle switch on back of oscilloscope and mount SO 259 as close as possible to switch and back of CRT so you do not have to extend the leads any more than necessary. The vert. cont.'s. will not be operational. Sync & Horizontal will need to be adjusted as necessary. To return to normal operation throw the switch.