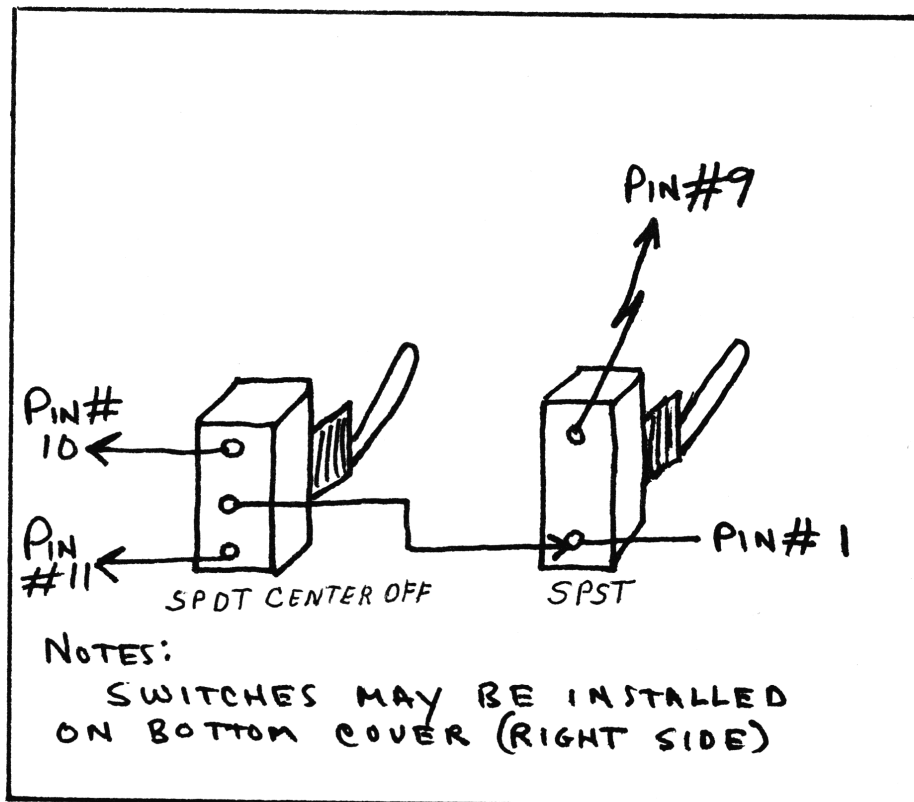


SEARS ROAD-TALKER 40
MODEL #934-3827-0700
CHANNEL EXPANSION AND SLIDE

- 1-Remove R303. Unsolder the green wire from the clarifier control at the printed circuit board and connect to 8 volts regulated, this is found at point BB. There is a red wire solder there. Solder the green wire to the red wire. Follow the black wire from the clarifier, connect to the printed circuit board and unsolder it and move it to ground and solder. The unit will slide +2 and -2 KHZ. For +5 and -5 KHZ, remove ct 302 and ct 301, remove D304 and D 306 and install super diodes.
- 2-For maximum AM modulation, connect the anode of a 1N914 to the base of Q405 and ground the cathode.
- 3-AM power adjust RT602. ALC adjust RT701. Adjust L702 and L708 with 1000 HZ tone for peak AM. Note: RT602 is 13.8 regulator.
- 4-Cut the printed circuit trace at pin #9 and isolate the pin. Connect 6 inch piece of wire to pin #9, 10, and 11. Connect a 6 inch piece of wire to pin #1. You must have 2 switches, a single-pole, single-throw toggle and a double throw center off toggle. Connect pin #1 to the common of both switches, pin #9 to the blank pin of the single-pole, single-throw and pin #10 and #11 to the blank pins of the center off switch. Adjust the VCO for full coverage.



SEARS ROADTALKER

A--Switch on Front
B--Switch center

1	27.605	11	27.725	21	27.855	31	27.955
2	27.615	12	27.745	22	27.865	32	27.965
3	27.625	13	27.755	23	27.895	33	27.975
4	27.645	14	27.765	24	27.875	34	27.985
5	27.655	15	27.775	25	27.885	35	27.995
6	27.665	16	27.795	26	27.905	36	28.005
7	27.675	17	27.805	27	27.915	37	28.015
8	27.695	18	27.815	28	27.925	38	28.025
9	27.705	19	27.825	29	27.935	39	28.035
10	27.715	20	27.845	30	27.945	40	28.045

A--Switch off
B--Switch back

1	27.285	11	27.405	21	27.535	31	27.315
2	27.295	12	27.425	22	27.545	32	27.325
3	27.305	13	27.435	23	27.545	33	27.335
4	27.325	14	27.445	24	27.555	34	27.345
5	27.335	15	27.455	25	27.565	35	27.355
6	27.345	16	27.475	26	27.585	36	27.365
7	27.355	17	27.485	27	27.595	37	27.375
8	27.375	18	27.495	28	27.285	38	27.385
9	27.385	19	27.505	29	27.295	39	27.395
10	27.395	20	27.525	30	27.305	40	27.405

A--Switch off
B--Switch Front

1	27.125	11	27.245	21	27.215	31	27.475
2	27.135	12	27.265	22	27.225	32	27.485
3	27.145	13	27.275	23	27.255	33	27.495
4	27.165	14	27.125	24	27.235	34	27.505
5	27.175	15	27.135	25	27.245	35	27.515
6	27.185	16	27.155	26	27.265	36	27.525
7	27.195	17	27.165	27	27.275	37	27.535
8	27.215	18	27.175	28	27.445	38	27.545
9	27.225	19	27.185	29	27.455	39	27.555
10	27.235	20	27.205	30	27.465	40	27.565

B--Switch center
A--Switch off back

NORMAL 1-40

Switch-A-Forward

Switch-B-Back

1	27.765	11	27.885	21	27.855	31	28.115
2	27.775	12	27.905	22	27.865	32	28.125
3	27.785	13	27.915	23	27.895	33	28.135
4	27.805	14	27.765	24	27.875	34	28.145
5	27.815	15	27.775	25	27.885	35	28.155
6	27.825	16	27.795	26	27.905	36	28.165
7	27.835	17	27.805	27	27.915	37	28.175
8	27.855	18	27.815	28	28.085	38	28.185
9	27.865	19	27.825	29	28.095	39	28.195
10	27.875	20	27.845	30	28.105	40	28.205