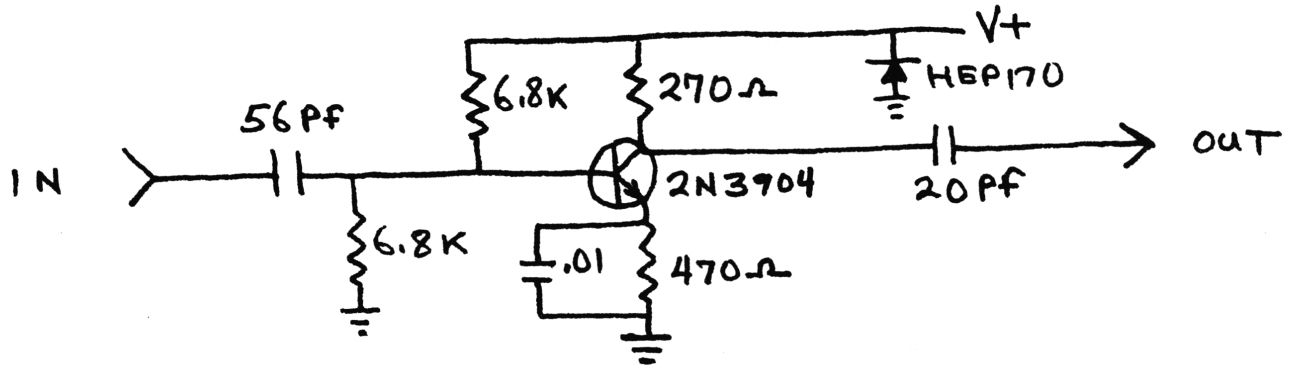


HERE IS A RECEIVER PREAMP YOU CAN BUILD



THIS UNIT MAY BE INSTALLED IN A RADIO. IT MAY BE USED AS A COUNTER PREAMP OR SCOPE AMP.



On the 14T302 RCA AM/SSB radio you can use a SPDT center off switch to ground pins 9 & 10. If you make a small plate like the above drawing, you can replace the noise blanker switch with the SPDT center off switch. Then with a minor adjustment of the VCO, you will get 27.415-27.595 on channels 11-27. In the other position you will get 27.605 thru 28.045. In the center off position you will be in the normal mode.