

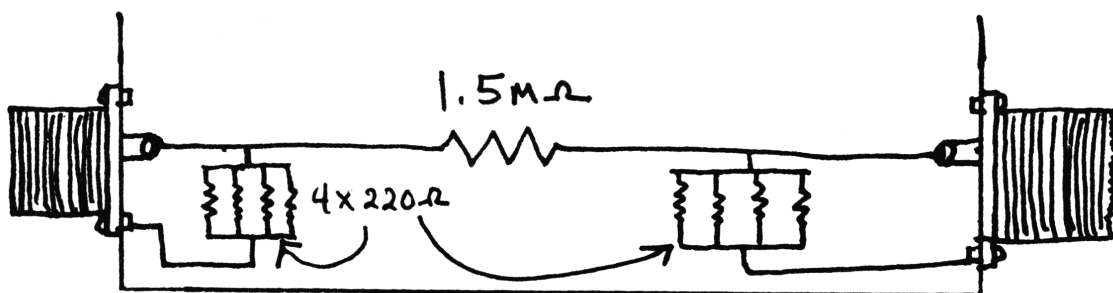
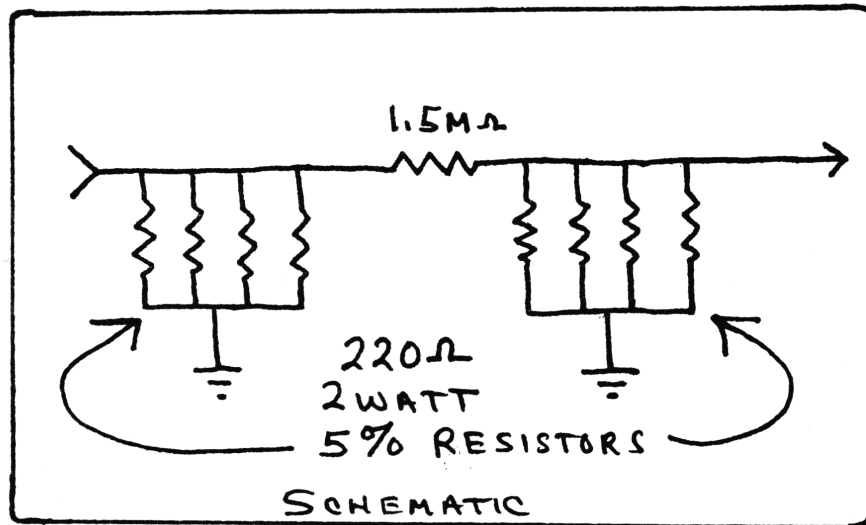
## TEST EQUIPMENT YOU CAN MAKE

### The 5 Mile Simulator

Your customer comes in the shop and says that his radio is not getting out, or that his radio squels or one of the many other complaints like mike problems. Well, this is the answer. All you need is another working radio. Connect the unit to each radio and talk to the other one. Use the external speaker jack with ear phones or turn down the radio and stand close. With this unit you will hear just what the radio will sound like at a distance of 5 miles.

The Parts You Will Need Are As Follows:

- (1) One small metal mini Box Bud or Radio Shack
- (2) Two chassis mount coax connectors
- (3) Eight 220 ohms 2 watt 5% resistors
- (4) One 1.5M ohms  $\frac{1}{4}$  watt
- (5) Two 6 Foot Jumpers
- (6) Two terminal lugs



"THE 5 MILE SIMULATOR"