

BUILT-IN POWER MIC

NEW PRODUCT RELEASE

The PM-1 Built-In Power Mic is a variable-gain 40dB amplifier especially designed to eliminate squeal and muffled sound normally associated with conventional power mics. Since the PM-1 runs off of the radios internal power supply, NO BATTERIES ARE NEEDED, ever! The PM-1 is also well suited for radios with CONTROLS IN THEIR MICROPHONES that cannot otherwise accept conventional external power mics.

The performance of the PM-1 greatly surpasses the performance of the first mic amp in most CB transceivers. Thus, using the PM-1, this stage can be eliminated, which many times results in cleaner modulation and reduced "muffled" transmission. NOTE: the PM-1 must never be installed as to defeat the transceivers modulation limiter which would result in direct violation of the Federal Communications Commission.

Once installed and properly adjusted, the PM-1 gives the user clean, optimum modulation without the need for adjusting external "mic gain" controls.

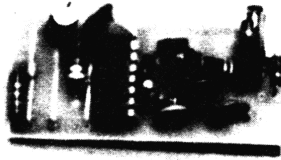
INSTALLATION

The PM-1 is relatively easy to install. If the first mic amp is left as is, only the audio lead from the microphone need be broken. The microphone side of the audio lead goes to the AUDIO INPUT (A). The radio side of the audio lead goes to the AUDIO OUTPUT (B). A wire should then be connected from the transmit wire on the mic connector to point (C). NOTE: When point (C) is grounded, the amplifier is ON; when point (C) has 12 volts on it, the amplifier is OFF. A short ground wire should then be run from point (D) to some point close to the audio input stage. Remember, this is also a DC return wire, so this cannot be connected to the case of the radio!! 12 volts should then be fed to point (E). The best place to obtain this voltage is on the power switch so power will be off when the radio is off, yet the input filters in the radio will keep ignition noises out of the power mic.

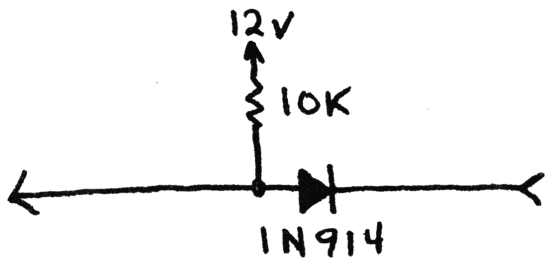
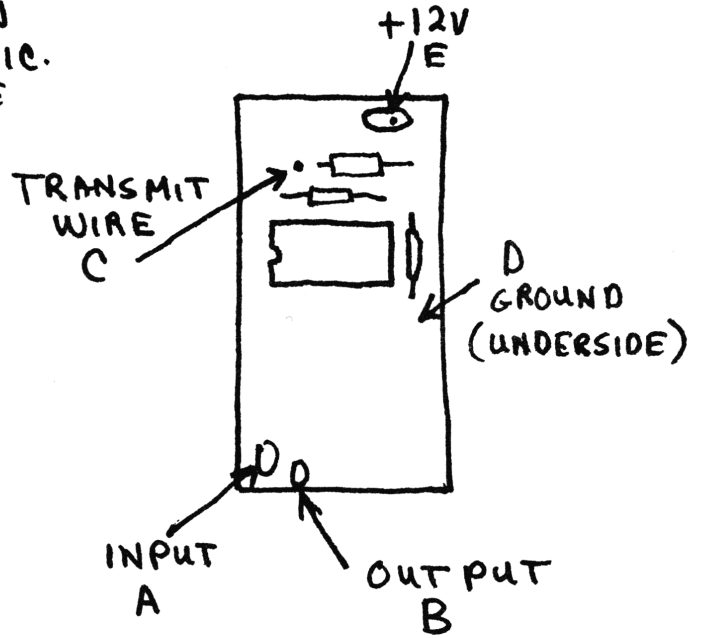
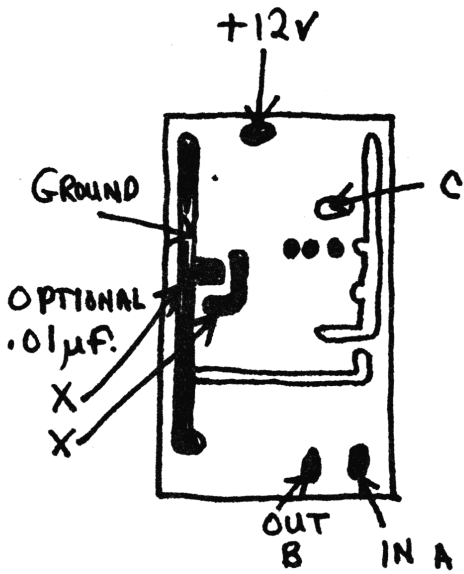
If the first mic amp in the transceiver is to be eliminated, connect the audio lead from the microphone to the AUDIO INPUT (A) Disconnect one side of the interstage coupling capacitor and connect this side to the AUDIO OUTPUT (B) to keep the DC in the PM-1 out of the radio.

In the rare event that squealing does occur, connect a .01uf ceramic capacitor between points x,x on the power mic board.

BUILT-IN POWER MIC (CONTINUED)



BUILT IN
POWER MIC.
MODULE



FROM POINT
13 ON CYBERNET
MIDLAND, RCA ETC. PCB.

When using the PM-1 on 23 channel CYBERNET radios, the additional diode and capacitor are necessary. The ground wire should be connected to point G1, located next to the TC7205 audio IC. This is most important.

ADVANCED COMMUNICATIONS